

**ADDENDUM #8**

**Will County Health Department**  
**BID PACKAGE #3 – MEP/Finishes/Carpentry/Glazing**  
**December 12, 2018**

This addendum will be included in all future sets of drawings distributed and on the Leopardo Building Connected website.

**Division 1 – General Instructions**

**1.0 Bid Instructions**

**A. Bid Submission**

1. *There will be NO bid due date extension for this addendum. Final bids for Bidding Packages 3-06 Carpentry and 3-07 Glazing are due no later than 3:00PM on Tuesday, December 18, 2018.*
2. *All other BP3 Bid Packages bids were due at 1:00PM Wednesday December 12<sup>th</sup>, 2018.*

**1.1 Bid Documents**

**A. Schedule of Bid Documents**

The following documents are included as part of this bid addendum:

<b>DATE</b>	<b>DESCRIPTION</b>	<b>By</b>
12/12/18	Addendum Narrative (this document)	Leopardo Companies
12/12/18	Revisions Narrative and Drawing Index (attached)	Kluber
12/12/18	Specification Section Revisions ( <u>As Listed Below</u> )	Kluber
12/12/18	Drawing Revisions (attached)	Kluber

**2.0 General Information**

**A. Revised Specification Sections – Dated 2018.12.12**

- Section 000115 – Drawing Index

**B. Revised Drawings Sheets – Dated 2018.12.12**

- G200
- A830
- A831

**END OF ADDENDUM #8**

**SECTION 00 91 10  
BP #3 - ADDENDUM NUMBER 8**

**DATE:** DECEMBER 12, 2018

**PROJECT:** WILL COUNTY HEALTH DEPARTMENT - NEW HEALTH DEPARTMENT  
BUILDING  
501 ELLA AVENUE  
JOLIET, ILLINOIS 60433

**PROJECT NO:** 17-401-1124

**OWNER:** THE COUNTY OF WILL  
302 NORTH CHICAGO STREET  
JOLIET, ILLINOIS 60432

**TO:** PROSPECTIVE BIDDERS / PLANHOLDERS OF RECORD

This Addendum forms a part of the Contract Documents and modifies the Bidding Documents dated 11/20/2018, with amendments and additions noted below. Acknowledge receipt of this Addendum in the space provided in the Bid Form. Failure to do so may subject the Bidder to disqualification.

This Addendum consists of Two (2) pages, Document 00 01 15 - Drawing Index, and Drawings G200, A830 & A831.

**CHANGES TO INTRODUCTORY INFORMATION**

**1.01 DOCUMENT 00 01 15 - DRAWING INDEX**

- A. Add "Drawing A830 - DOOR DETAILS" to the listing.
- B. Add "Drawing A831 - DOOR DETAILS" to the listing.

**CHANGES TO THE DRAWINGS**

**2.01 DRAWING G200 - GENERAL NOTES, SYMBOLS & DRAWING INDEX**

- A. Index of Drawings: Added two Architectural Sheets: A830 & A831 - DOOR DETAILS to the set.

**2.02 DRAWING A830 - DOOR DETAILS**

- A. Added this full sheet of door details to the drawing set in its entirety.

### **2.03 DRAWING A831 - DOOR DETAILS**

A. Added this full sheet of door details to the drawing set in its entirety.

**END OF DOCUMENT**

**SECTION 00 01 15  
DRAWING INDEX**

**GENERAL**

G100	COVER SHEET
G200	GENERAL NOTES, SYMBOLS, & DRAWING INDEX <i>[BP#3 - ADDENDUM #8]</i>
G201	ACCESSIBILITY REQUIREMENTS
G301	CODE REVIEW - BUILDING CONSTRUCTION
G302	CODE REVIEW - MEANS OF EGRESS

**CIVIL**

C100	GENERAL NOTES & SPECIFICATIONS
C101	GENERAL NOTES & SPECIFICATIONS
C102	EXISTING CONDITIONS 1 OF 2
C103	EXISTING CONDITIONS 2 OF 2
C200	SITE DEMOLITION PLAN
C300	SITE PLAN
C400	OVERALL GRADING PLAN
C401	DETAILED GRADING PLAN (NORTH)
C402	DETAILED GRADING PLAN (SOUTH)
C500	EROSION CONTROL PLAN
C501	EROSION CONTROL SPECIFICATION & NOTES
C502	EROSION CONTROL DETAILS
C503	EROSION CONTROL DETAILS
C600	OVERALL SITE UTILITY PLAN
C700	STANDARD DETAILS - TRAFFIC CONTROL
C701	STANDARD DETAILS - TRAFFIC CONTROL
C800	STANDARD DETAILS - STORM
C801	STANDARD DETAILS - STORM
C802	STANDARD DETAILS - STORM
C803	STANDARD DETAILS - STORM

C804	STANDARD DETAILS - WATER & SEWER
C805	STANDARD DETAILS - WATER & SEWER
C900	STANDARD DETAILS - PAVEMENT

## **LANDSCAPE**

L100	LANDSCAPE PLAN
L101	LANDSCAPE PLAN
L102	LANDSCAPE PLAN
L103	LANDSCAPE DETAILS
L104	LANDSCAPE SPECIFICATIONS
L105	LANDSCAPE SPECIFICATIONS

## **ARCHITECTURAL**

A050	ARCHITECTURAL DEMOLITION SITE PLAN
A100	ARCHITECTURAL SITE PLAN
A311	PARTIAL FIRST FLOOR PLAN - AREA 'A'
A312	PARTIAL FIRST FLOOR PLAN - AREA 'B'
A321	PARTIAL SECOND FLOOR PLAN - AREA 'A'
A322	PARTIAL SECOND FLOOR PLAN - AREA 'B'
A330	ROOF PLAN
A411	PARTIAL FIRST FLOOR REFLECTED CEILING PLAN - AREA 'A'
A412	PARTIAL FIRST FLOOR REFLECTED CEILING PLAN - AREA 'B'
A421	PARTIAL SECOND FLOOR REFLECTED CEILING PLAN - AREA 'A'
A422	PARTIAL SECOND FLOOR REFLECTED CEILING PLAN - AREA 'B'
A500	ENLARGED PLANS
A501	ENLARGED PLANS
A502	ENLARGED PLANS
A503	ENLARGED PLANS
A504	ENLARGED PLANS
A600	BUILDING SECTIONS

A601	BUILDING SECTIONS
A602	BUILDING SECTIONS
A603	BUILDING SECTIONS
A604	BUILDING SECTIONS
A605	BUILDING SECTIONS
A700	EXTERIOR BUILDING ELEVATIONS
A701	EXTERIOR BUILDING ELEVATIONS
A811	FIRST FLOOR DOOR & FRAME SCHEDULE
A812	SECOND FLOOR DOOR & FRAME SCHEDULE
A820	DOOR, FRAME & HARDWARE SCHEDULES
A830	DOOR DETAILS <b>[BP#3 - ADDENDUM #8]</b>
A831	DOOR DETAILS <b>[BP#3 - ADDENDUM #8]</b>
A911	PARTIAL FIRST FLOOR FINISHES PLAN - AREA 'A'
A912	PARTIAL FIRST FLOOR FINISHES PLAN - AREA 'B'
A921	PARTIAL SECOND FLOOR FINISHES PLAN - AREA 'A'
A922	PARTIAL SECOND FLOOR FINISHES PLAN - AREA 'B'
A930	INTERIOR ELEVATIONS
A931	INTERIOR ELEVATIONS
A932	INTERIOR ELEVATIONS
A933	INTERIOR ELEVATIONS
A934	INTERIOR ELEVATIONS
A935	INTERIOR ELEVATIONS
A936	INTERIOR ELEVATIONS
A940	INTERIOR DETAILS
A941	INTERIOR DETAILS
A951	SIGN TYPES AND FIRST FLOOR SIGNATE SCHEDULE
A952	SECOND FLOOR SIGNAGE SCHEDULE
A1000	PLAN DETAILS
A1001	PLAN DETAILS
A1002	PLAN DETAILS

A1100	INTERIOR PARTITION TYPES
A1200	WALL SECTIONS
A1201	WALL SECTIONS
A1202	WALL SECTIONS
A1203	SECTION DETAILS
A1204	SECTION DETAILS
A1205	SECTION DETAILS
A1206	SECTION DETAILS

## **STRUCTURAL**

S010	GENERAL NOTES, CODE & LOADING, TESTING & INSPECTIONS, ABBREVIATIONS
S011	NOTES, SYMBOLS & NOMENCLATURE
S311	PARTIAL FOUNDATION PLAN - AREA 'A'
S311S	PARTIAL SLAB ON GRADE PLAN - AREA 'A'
S312	PARTIAL FOUNDATION PLAN - AREA 'B'
S312S	PARTIAL SLAB ON GRADE PLAN - AREA 'B'
S321	PARTIAL SECOND FLOOR FRAMING PLAN - AREA 'A'
S321S	PARTIAL SECOND FLOOR SLAB & LINTEL PLAN - AREA 'A'
S322	PARTIAL SECOND FLOOR FRAMING PLAN - AREA 'B'
S322S	PARTIAL SECOND FLOOR SLAB & LINTEL PLAN - AREA 'B'
S331	PARTIAL ROOF FRAMING PLAN - AREA 'A'
S331S	PARTIAL ROOF SLAB AND LINTEL PLAN - AREA 'A'
S332	PARTIAL ROOF FRAMING PLAN - AREA 'B'
S332S	PARTIAL ROOF SLAB & LINTEL PLAN - AREA 'B'
S341	PARTIAL HIGH ROOF & SCREEN WALL FRAMING PLAN - AREA 'A'
S342	PARTIAL HIGH ROOF & SCREEN WALL FRAMING PLAN - AREA 'B'
S400	STANDARD FOUNDATION SECTIONS AND DETAILS
S401	PIER DETAILS AND SECTIONS
S402	PIER DETAILS

S410	FOUNDATION SECTIONS AND DETAILS
S500	STANDARD FLOOR FRAMING SECTIONS AND DETAILS
S501	FLOOR FRAMING SECTIONS AND DETAILS
S510	FLOOR FRAMING SECTIONS AND DETAILS
S600	STANDARD ROOF FRAMING SECTIONS AND DETAILS
S601	MOMENT CONNECTION DETAILS
S610	ROOF FRAMING SECTIONS AND DETAILS
S611	ROOF FRAMING SECTIONS AND DETAILS

### **MECHANICAL**

M311	PARTIAL FIRST FLOOR VENTILATION PLAN - AREA 'A'
M312	PARTIAL FIRST FLOOR VENTILATION PLAN - AREA 'B'
M321	PARTIAL SECOND FLOOR VENTILATION PLAN - AREA 'A'
M322	PARTIAL SECOND FLOOR VENTILATION PLAN - AREA 'B'
M330	MECHANICAL ROOF PLAN
M411	PARTIAL FIRST FLOOR PIPING PLAN - AREA 'A'
M412	PARTIAL FIRST FLOOR PIPING PLAN - AREA 'B'
M421	PARTIAL FIRST SECOND FLOOR PIPING PLAN - AREA 'A'
M422	PARTIAL FIRST SECOND FLOOR PIPING PLAN - AREA 'B'
M510	TEMPERATURE CONTROLS AND PIPING SCHEMATIC
M511	TEMPERATURE CONTROLS
M512	TEMPERATURE CONTROLS
M610	MECHANICAL VENTILATION DETAILS
M611	MECHANICAL PIPING DETAILS
M710	MECAHNICAL SCHEDULES

### **FIRE PROTECTION**

F311	PARTIAL FIRST FLOOR FIRE PROTECTION PLAN - AREA 'A'
F312	PARTIAL FIRST FLOOR FIRE PROTECTION PLAN - AREA 'B'
F321	PARTIAL SECOND FLOOR FIRE PROTECTION PLAN - AREA 'A'



F322 PARTIAL SECOND FLOOR FIRE PROTECTION PLAN - AREA 'B'

## **PLUMBING**

P301 PARTIAL UNDERGROUND PLUMBING PLAN - AREA 'A'  
P302 PARTIAL UNDERGROUND PLUMBING PLAN - AREA 'B'  
P311 PARTIAL FIRST FLOOR PLUMBING PLAN - AREA 'A'  
P312 PARTIAL FIRST FLOOR PLUMBING PLAN - AREA 'B'  
P321 PARTIAL SECOND FLOOR PLUMBING PLAN - AREA 'A'  
P322 PARTIAL SECOND FLOOR PLUMBING PLAN - AREA 'B'  
P330 PLUMBING ROOF PLAN  
P410 PLUMBING SCHEDULES AND DETAILS  
P510 PLUMBING RISER DIAGRAMS  
P511 PLUMBING RISER DIAGRAMS

## **ELECTRICAL**

E050 ELECTRICAL ABBREVIATIONS & SYMBOLS LIST  
E100 ELECTRICAL SITE PLAN  
E101 ELECTRICAL SITE LIGHTING PHOTOMETRIC PLAN  
E311 PARTIAL FIRST FLOOR ELECTRICAL POWER PLAN - AREA 'A'  
E312 PARTIAL FIRST FLOOR ELECTRICAL POWER PLAN - AREA 'B'  
E321 PARTIAL SECOND FLOOR ELECTRICAL POWER PLAN - AREA 'A'  
E322 PARTIAL SECOND FLOOR ELECTRICAL POWER PLAN - AREA 'B'  
E330 ELECTRICAL ROOF PLAN  
E411 PARTIAL FIRST FLOOR ELECTRICAL LIGHTING PLAN - AREA 'A'  
E412 PARTIAL FIRST FLOOR ELECTRICAL LIGHTING PLAN - AREA 'B'  
E421 PARTIAL SECOND FLOOR ELECTRICAL LIGHTING PLAN - AREA 'A'  
E422 PARTIAL SECOND FLOOR ELECTRICAL LIGHTING PLAN - AREA 'B'  
E600 ELECTRICAL ONE LINE RISER DIAGRAM & DETAILS  
E610 ELECTRICAL FIRE ALARM RISER DIAGRAM & DETAILS  
E620 ELECTRICAL SCHEDULES & DETAILS

**TECHNOLOGY**

<b>T000</b>	<b><i>SITE TELECOMMUNICATION PLAN - EXISTING [BP#1- ADDENDUM #1]</i></b>
T001	SITE TELECOMMUNICATION PLAN - CURRENT BUILDING
T002	SITE TELECOMMUNICATION PLAN - NEW BUILDING
T311	FIRST FLOOR STRUCTURED CABLING - AREA 'A'
T312	FIRST FLOOR STRUCTURED CABLING - AREA 'B'
T321	SECOND FLOOR STRUCTURED CABLING - AREA 'A'
T322	SECOND FLOOR STRUCTURED CABLING - AREA 'B'
T411	FIRST FLOOR SPECIAL SYSTEMS - AREA 'A'
T412	FIRST FLOOR SPECIAL SYSTEMS ' AREA 'B'
T421	SECOND FLOOR SPECIAL SYSTEMS - AREA 'A'
T422	SECOND FLOOR SPECIAL SYSTEMS - AREA 'B'

**END OF DOCUMENT**

GENERAL NOTES

ALL CONSTRUCTION SHALL BE IN ACCORDANCE WITH THE REQUIREMENTS SET FORTH BY THE 2015 INTERNATIONAL BUILDING CODE AND SHALL CONFORM TO ALL OTHER APPLICABLE MUNICIPAL, STATE, AND FEDERAL REGULATIONS INCLUDING THE ILLINOIS ACCESSIBILITY CODE (1997) AND THE AMERICANS WITH DISABILITIES ACT.

A. GENERAL NOTES

- 1. ALL CONTRACTORS ARE REQUIRED TO VISIT THE SITE AND BE KNOWLEDGEABLE REGARDING EXISTING CONDITIONS AND THEIR EFFECT ON THE PROPOSED WORK. CONTRACTORS SHALL VERIFY AND BE RESPONSIBLE FOR ANY CONDITIONS REQUIRING MODIFICATION BEFORE PROCEEDING WITH THE PROJECT.
2. NOTIFY THE OWNER'S REPRESENTATIVE A MINIMUM OF 72 HOURS PRIOR TO THE INTERRUPTION OF ANY UTILITY.
3. PROTECT AND KEEP IN SERVICE ACTIVE UNDERGROUND UTILITIES, PIPES, OR CONDUITS, WHETHER INDICATED ON THE DRAWINGS OR NOT, UNLESS SPECIFICALLY CALLED FOR TO BE REMOVED, RELOCATED, OR DISCONNECTED AND ABANDONED.
4. CONTRACTORS AND SUBCONTRACTORS SHALL COORDINATE THEIR WORK WITH THAT OF OTHER TRADES.
5. NO WORK WILL BE PERMITTED TO BE INSTALLED WITHOUT RECEIPT AND SUBSEQUENT REVIEW OF FULL AND COMPLETE SUBMITTALS BY THE ARCHITECT/ENGINEER.
6. DO NOT SCALE DRAWINGS, DIMENSIONS INDICATED TAKE PRECEDENCE OVER SCALE.
7. VERIFY ALL DIMENSIONS AND ELEVATIONS IN THE FIELD. WHERE DISCREPANCIES ARE FOUND BETWEEN DIMENSIONS OR ELEVATIONS SHOWN AND ACTUAL FIELD CONDITIONS, NOTIFY ARCHITECT/ENGINEER.
8. WHERE CONFLICTS MAY EXIST BETWEEN THE REQUIREMENTS OF PORTIONS OF THE CONTRACT DOCUMENTS, THE GREATER QUANTITY, HIGHER QUALITY OR MORE STRINGENT REQUIREMENT SHALL GOVERN. THEREFORE, BY EXECUTING A CONTRACT FOR CONSTRUCTION, THE CONTRACTOR AGREES THAT, IF IT RAISED NO QUESTIONS REGARDING SUCH CONFLICTS DURING THE BIDDING PROCESS, AND IN THE ABSENCE OF A CLARIFYING ADDENDUM ISSUED DURING THE BIDDING PROCESS, IT HAS VOLUNTARILY TO COMPLY WITH THE MORE EXPENSIVE REQUIREMENT AS PART OF ITS BIDDING AND IS NOT ENTITLED TO ANY ADDITIONAL COMPENSATION TO RESOLVE THE CONFLICT.
9. THE CONTRACT DOCUMENTS REQUIRE THE CONTRACTOR TO FURNISH AND INSTALL COMPLETE PRODUCTS, SYSTEMS AND SERVICES. BY EXECUTING A CONTRACT FOR CONSTRUCTION, THE CONTRACTOR AGREES THAT THE DRAWINGS SET FORTH THE DESIGN INTENT AND, THEREFORE, MAY NOT EXPRESSLY DEPICT EVERY LENGTH, SEGMENT, PIECE, PART, COMPONENT OR UNIT OF A PRODUCT, SYSTEM OR SERVICE. THE CONTRACTOR FURTHER AGREES THAT, AS PART OF ITS BID, IT MUST FURNISH AND INSTALL EVERY LENGTH, SEGMENT, PIECE, PART, COMPONENT OR UNIT OF A PRODUCT, SYSTEM OR SERVICE AND, CONSEQUENTLY, THE CONTRACTOR IS NOT ENTITLED TO ANY ADDITIONAL COMPENSATION FOR ANY LENGTH, SEGMENT, PIECE, PART COMPONENT OR UNIT OF A PRODUCT, SYSTEM OR SERVICE BECAUSE IT IS NOT EXPRESSLY DEPICTED HEREIN.
10. THE CONTRACT DOCUMENTS REQUIRE THE CONTRACTOR TO INSTALL A CONTINUOUS AIR BARRIER THROUGHOUT THE BUILDING ENVELOPE, IN COMPLIANCE WITH THE 2015 INTERNATIONAL ENERGY CONSERVATION CODE (IECC), SECTION C402.5 - AIR LEAKAGE. CONTRACTOR AND ITS SUBCONTRACTORS AGREE TO BE JOINTLY AND SEPARATELY RESPONSIBLE FOR COORDINATING AND VERIFYING THAT ALL SOURCES OF AIR LEAKAGE IN THE BUILDING THERMAL ENVELOPE ARE CAULKED, GASKETED, WEATHER STRIPPED, OR OTHERWISE APPROPRIATELY SEALED AIR-TIGHT USING CODE-COMPLIANT ALTERNATIVES AS APPROPRIATE FOR EACH MATERIAL AND CONDITION/LOCATION. PROVIDE AIR BARRIER MATERIALS HAVING AN AIR PERMEABILITY NO GREATER THAN 0.004 cfm/ft² (L/SM²) UNDER PRESSURE DIFFERENTIAL OF 0.3 INCHES WATER GAUGE (75 Pa) WHEN TESTED IN ACCORDANCE WITH ASTM E2178, AND COMPLY WITH IECC 2015 SECTION C402.5.1.2.1 - MATERIALS.

B. MISCELLANEOUS AND DEMOLITION NOTES

- 1. COORDINATE PENETRATIONS AND/OR SLEEVES REQUIRED IN WALLS, FLOORS, CEILINGS OR ROOFS FOR MECHANICAL AND ELECTRICAL WORK REQUIRED BY ARCHITECTURAL, MECHANICAL, ELECTRICAL, AND PLUMBING DRAWINGS.
2. SEAL PENETRATIONS OF DUCTWORK, CONDUIT OR PIPES WITH UL APPROVED MATERIALS TO MAINTAIN THE FIRE RATING OF ASSEMBLIES. PROVIDE FIRE DAMPERS AS INDICATED ON THE DRAWINGS.
3. APPLY APPROPRIATE & COMPATIBLE SEALANT MATERIALS AS REQUIRED TO SEPARATE DISSIMILAR METALS. FILL GAPS IN EXISTING ASSEMBLIES OR WHERE NEW AND EXISTING ASSEMBLIES MEET OR WHERE OTHERWISE REQUIRED BY THE SPECIFICATIONS.
4. BRING ANY UNFORESEEN OR CONFLICTING CONDITIONS TO THE IMMEDIATE ATTENTION OF THE ARCHITECT/ENGINEER BEFORE PROCEEDING WITH THE WORK.
5. REPAIR, PATCH, OR REPLACE FINISH MATERIALS OR VISIBLE ASSEMBLIES THAT ARE SOILED, CUT OR DAMAGED IN ANY FASHION DURING THE COURSE OF THE WORK. PERFORM PATCHING SUCH THAT EDGES BLEND INTO CONTIGUOUS SURFACES SMOOTHLY, MATCHING TEXTURE AND COLOR OF ADJACENT SURFACES.

Table with columns for Detail Number, Drawing Number, Column Number, Location Elevation, Room Number, Door No. New, Door No. Existing, Nominal Thickness, Construction Type, Special Condition, Keynote Identification, Window Type Identification, Toilet Accessory Identification, and Spot Elevation.

DRAFTING MATERIALS LEGEND

Table with columns for Material Name (e.g., PL LAM, PLB'G, PLB'G CONTR, PNT, PVC, PL-(1), R OR RAD, R, RO, RF (1), RH, REF, REINF, REQ'D, RM, SF, SI, SK, SSK, SQ, SCHED, SEAL/HDNR, SEC, SHT, SIM, SOG, SPEC, SPC'G, SPK'R, STN, STD, STD WGT, STL, STRUCT, SUSP, SYM, T, T&G, T/B, T/C, T/F, T/S, T/S, 1/STL, 1/W, TB (4), TOM, TYP, UNO, VBC, VBS, VCT, VEN PL (1), VERT, W, W/, W/O, WCG, WED, WGT, WND, WNO, WP, WWF, WSB) and its corresponding symbol.

INDEX OF DRAWINGS

Large table with columns for Drawing Number and Name, and sub-columns for Inclusion status (Included with B.P. #1, #2, #3) under three categories: General, Structural, and Fire Protection.

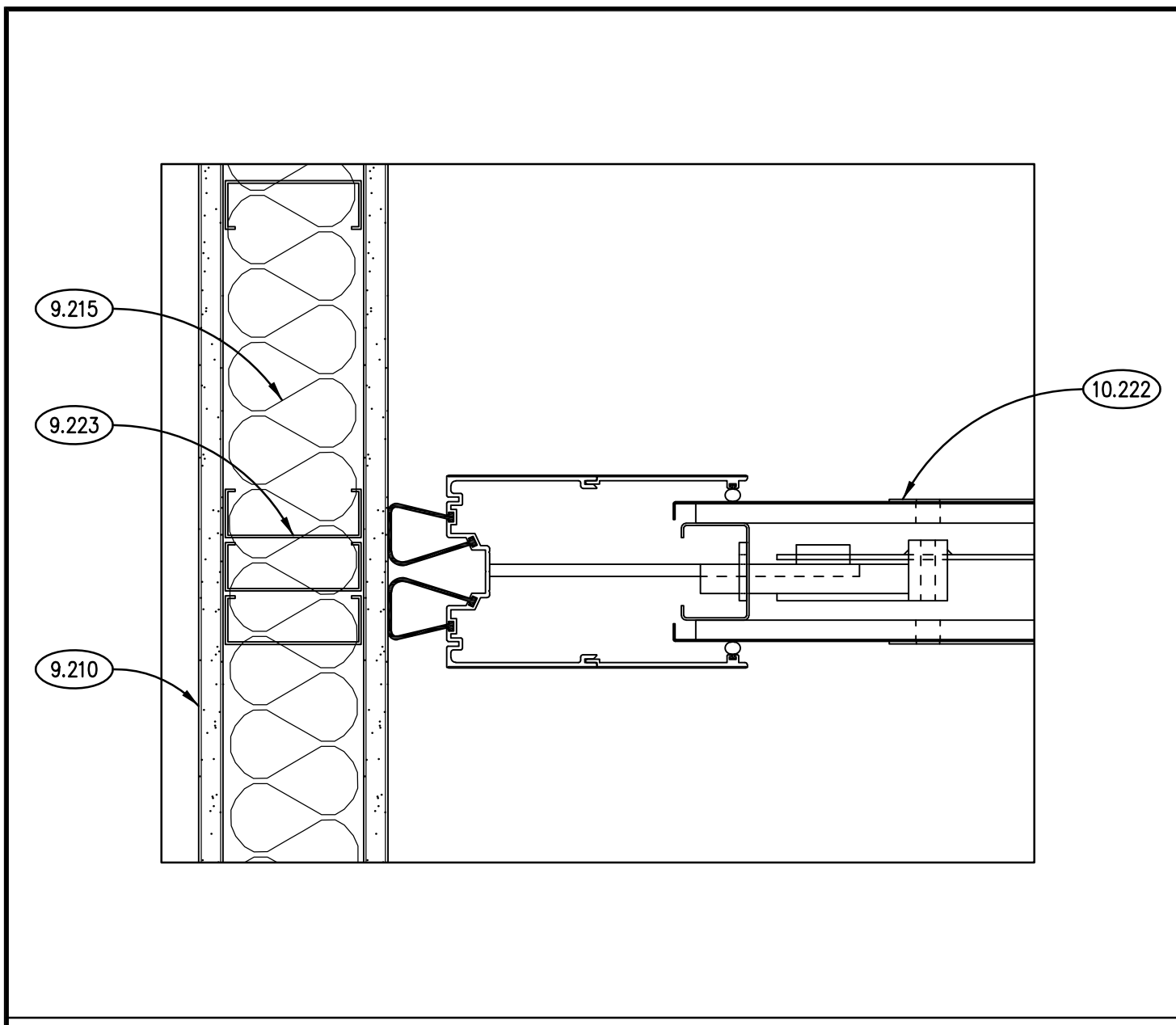
STANDARD ABBREVIATIONS

Table of standard abbreviations with columns for Abbreviation (e.g., @, A B, ABR, ACT, AFF, AFG, ACOUS, ADD'N, ADD'L, ADJ, AL, ALT, ANCH, AP, APPROX, ASPH, AUTO, AVG, BSM, BD, BITUM, BLDG, BLK'G, BM, B.M., BT STL PL, BRG, BRKT, BRK, BTM, BTWN, CJ, CAB, CEM PL-(1), CT PAV-(1), QPC, CLG, CLR, CO, CMU, COL, COMB, COMP, COMPTD, CONC, CONC OPNG, COND, CONT, CONTR, OPT-(1), CT-(1), CTR, CTR SK, CTS, CUH, CUV, DIA, DIM, DN, DR, DWG'S, DTL, DWL'S, EA, EJ, EL, ELEC, ELEC CONTR, ELEV, EMBD, EMER, EP PNT, EQ, EW, EWC, EWH, ER-(26), EXIST) and its corresponding meaning.

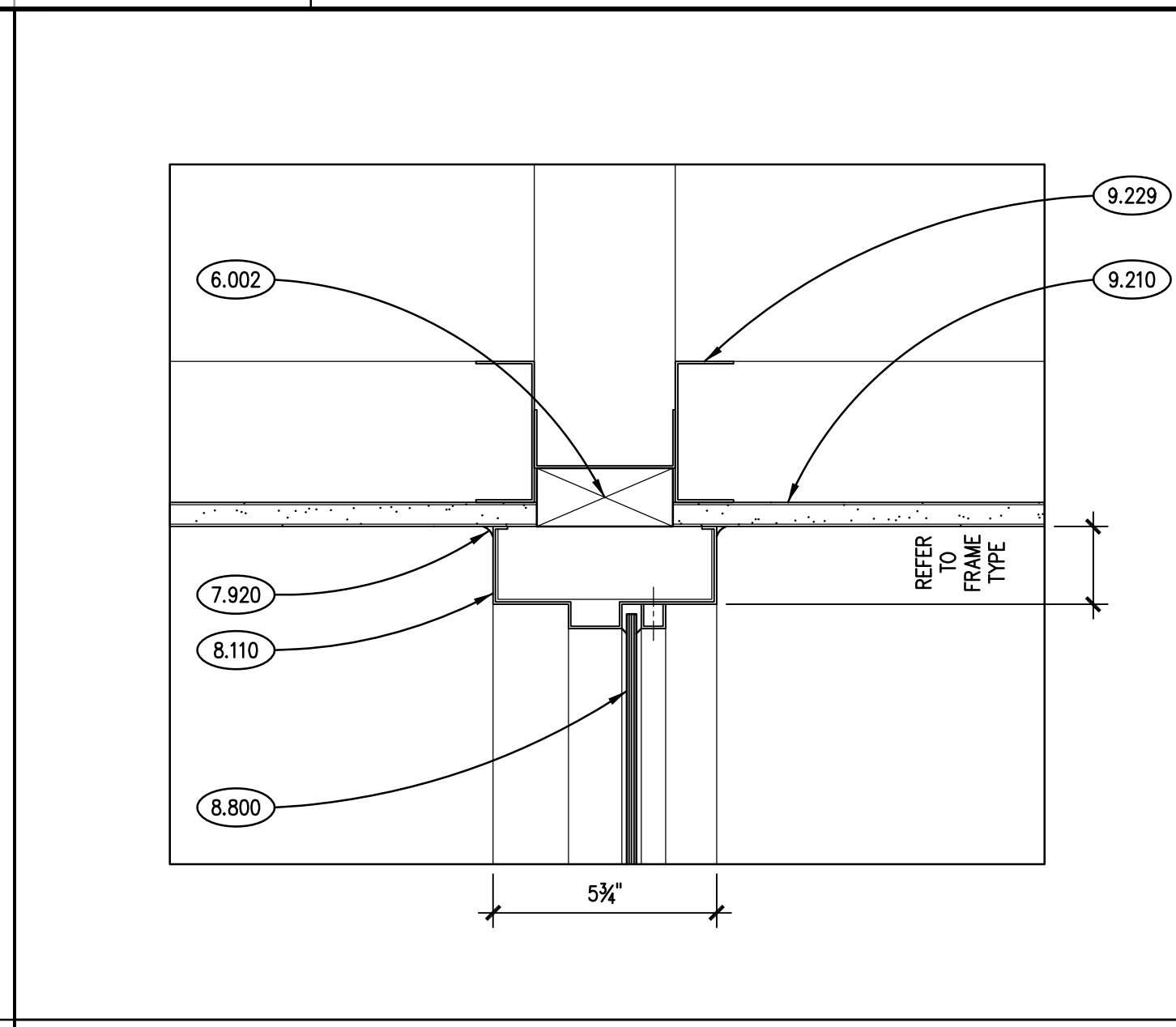
SEALS AND CERTIFICATES

Professional seal area containing a statement of preparation, four seal boxes for Architect, Electrical Engineer, Structural Engineer, and Mechanical Engineer, and a signature line for Kluber, Inc. License #184-001284.

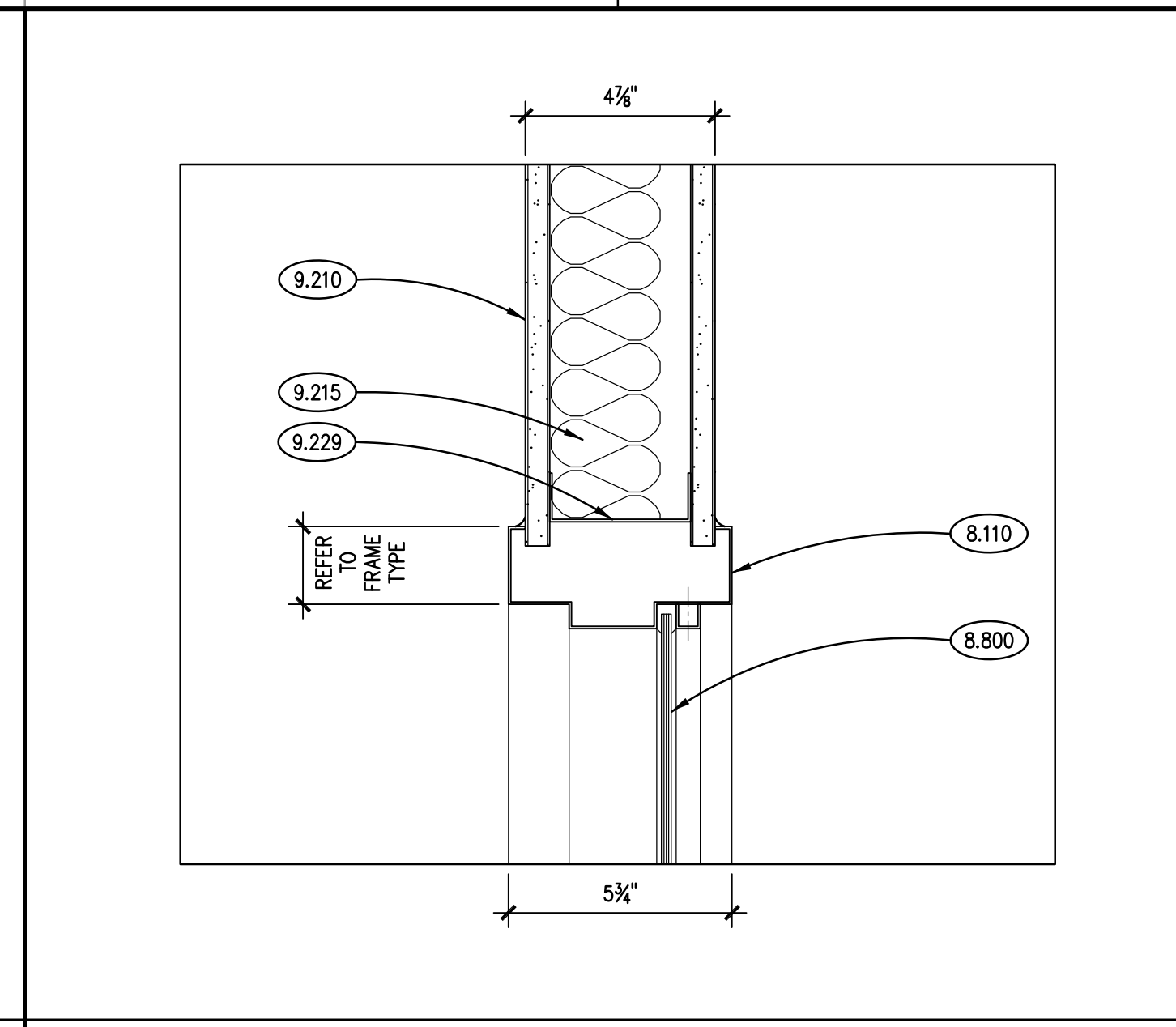
Vertical sidebar containing Kluber, Inc. contact information, Will County Health Department logo, and a table of issued drawings with columns for Issue Date, Drawing Number, and Description.



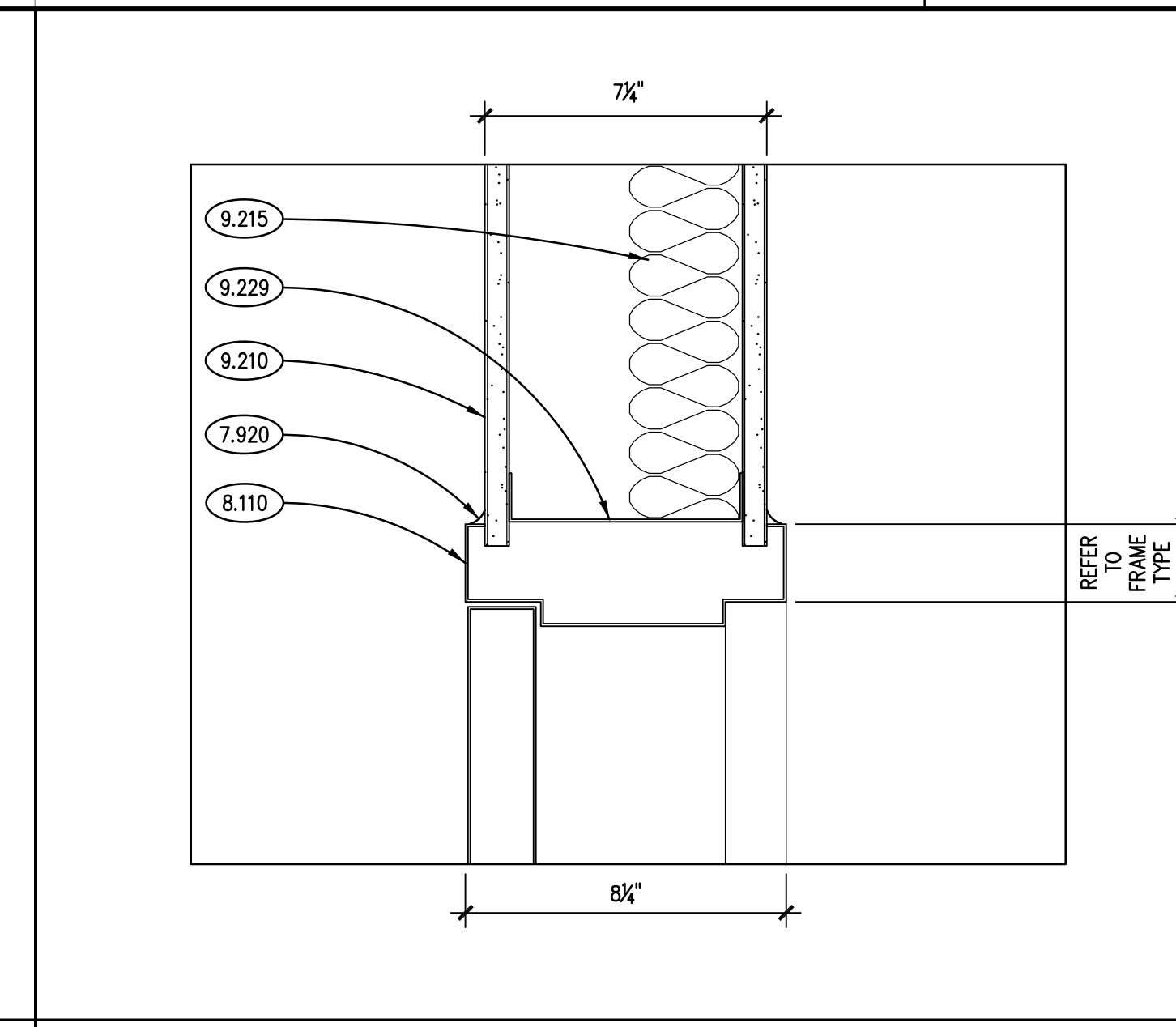
**JAMB DETAIL**  
SCALE: 3" = 1'-0" **16**



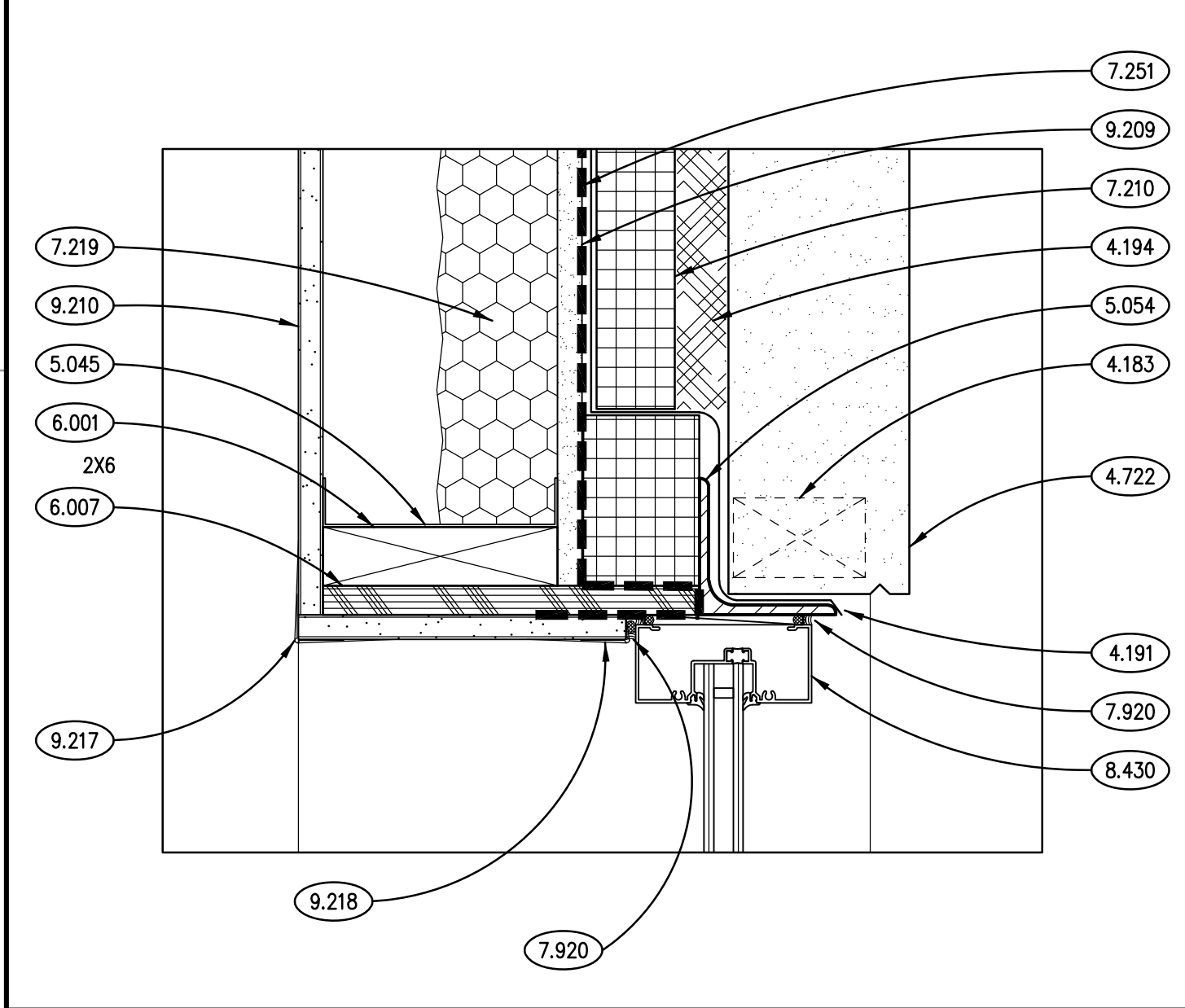
**HEAD DETAIL**  
SCALE: 3" = 1'-0" **12**



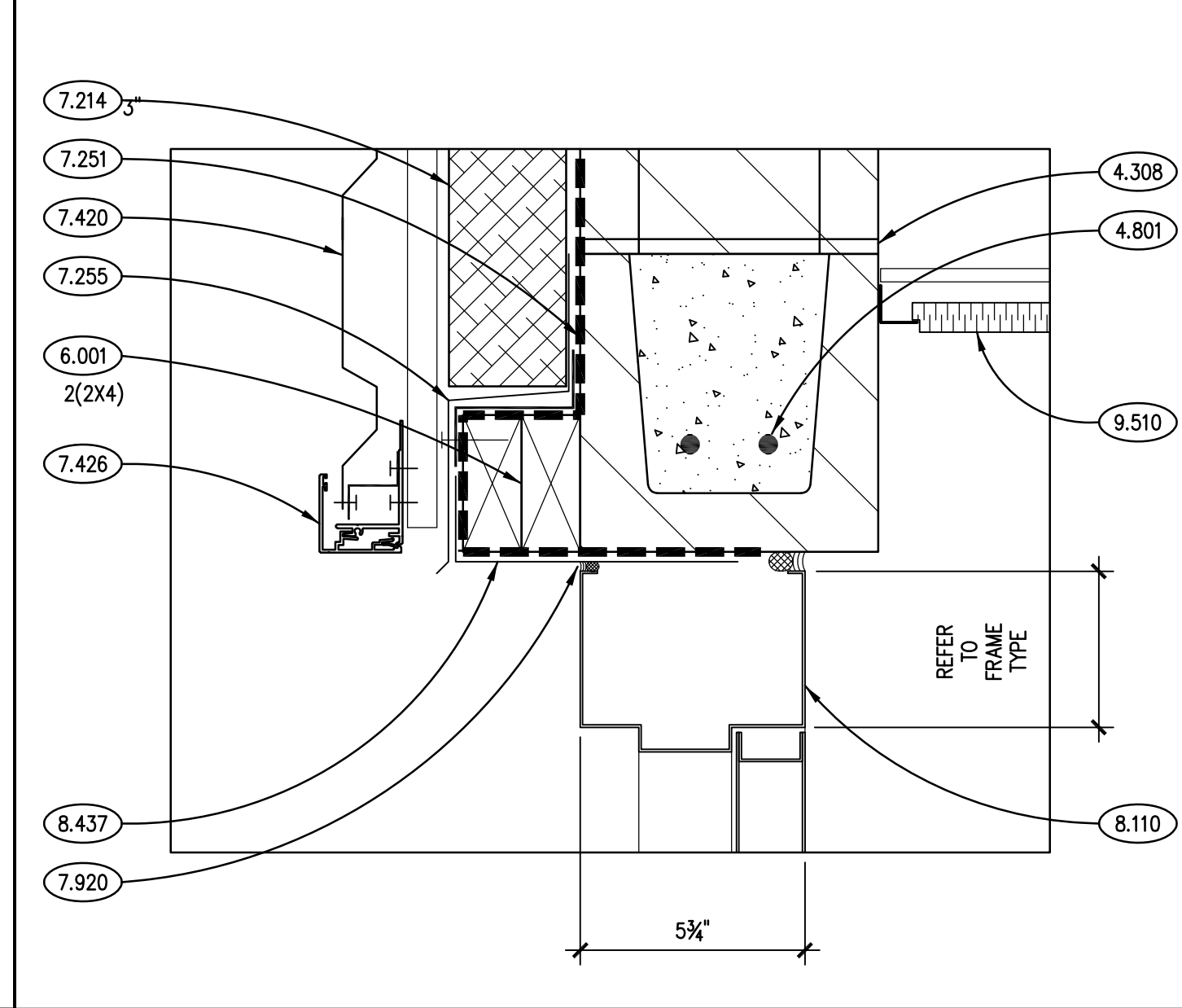
**HEAD DETAIL**  
SCALE: 3" = 1'-0" **8**



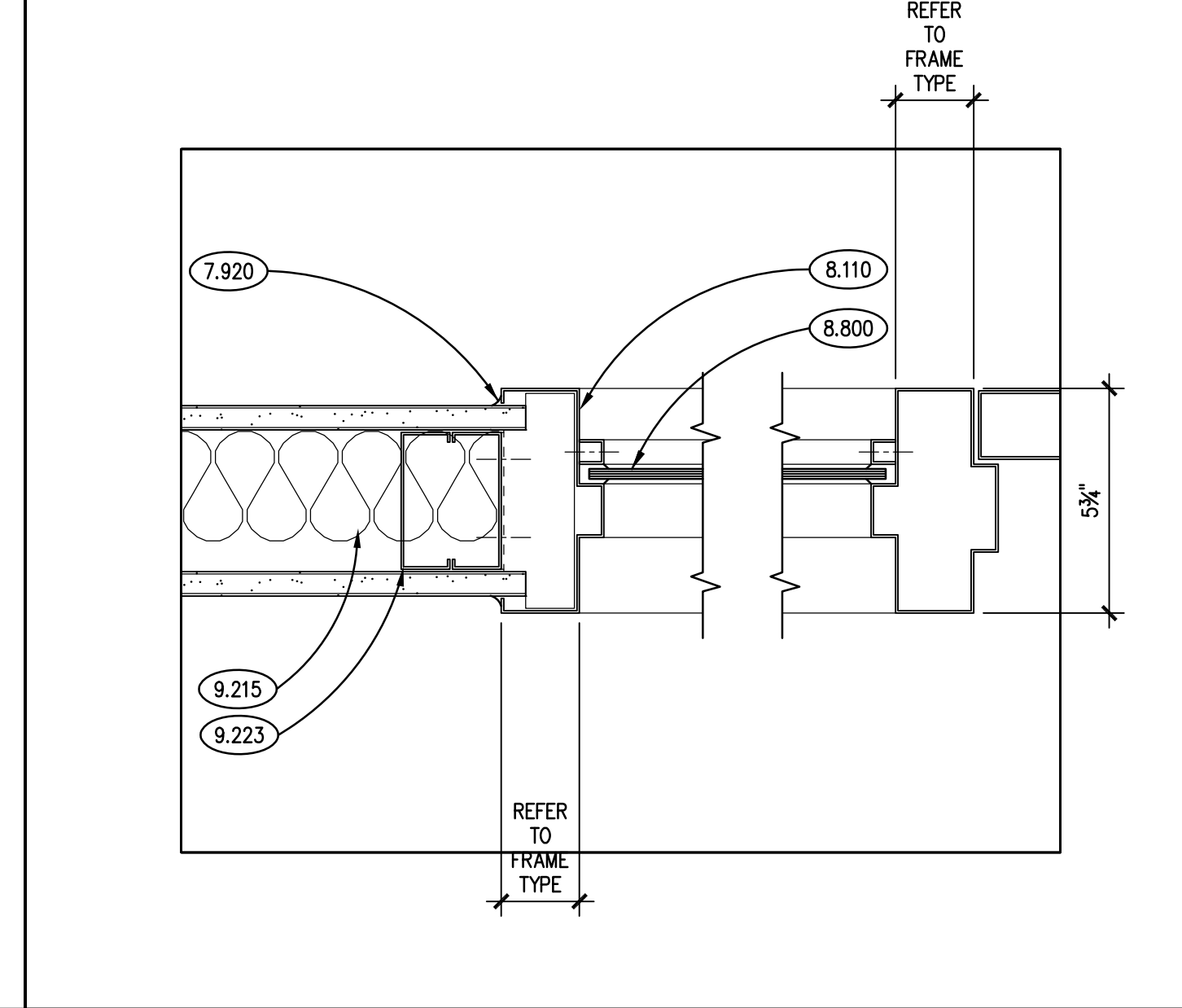
**HEAD DETAIL**  
SCALE: 3" = 1'-0" **4**



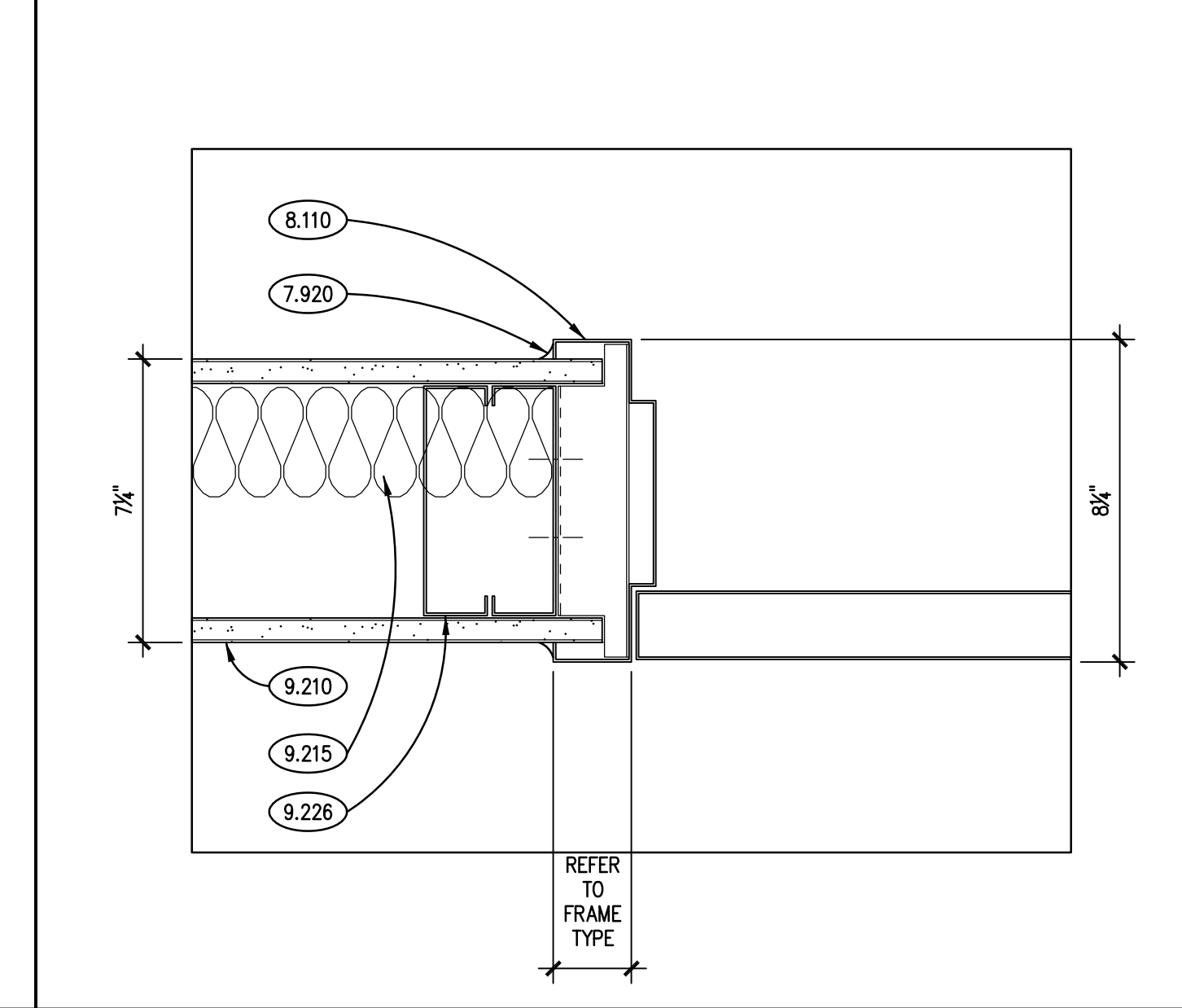
**HEAD DETAIL**  
SCALE: 3" = 1'-0" **15**



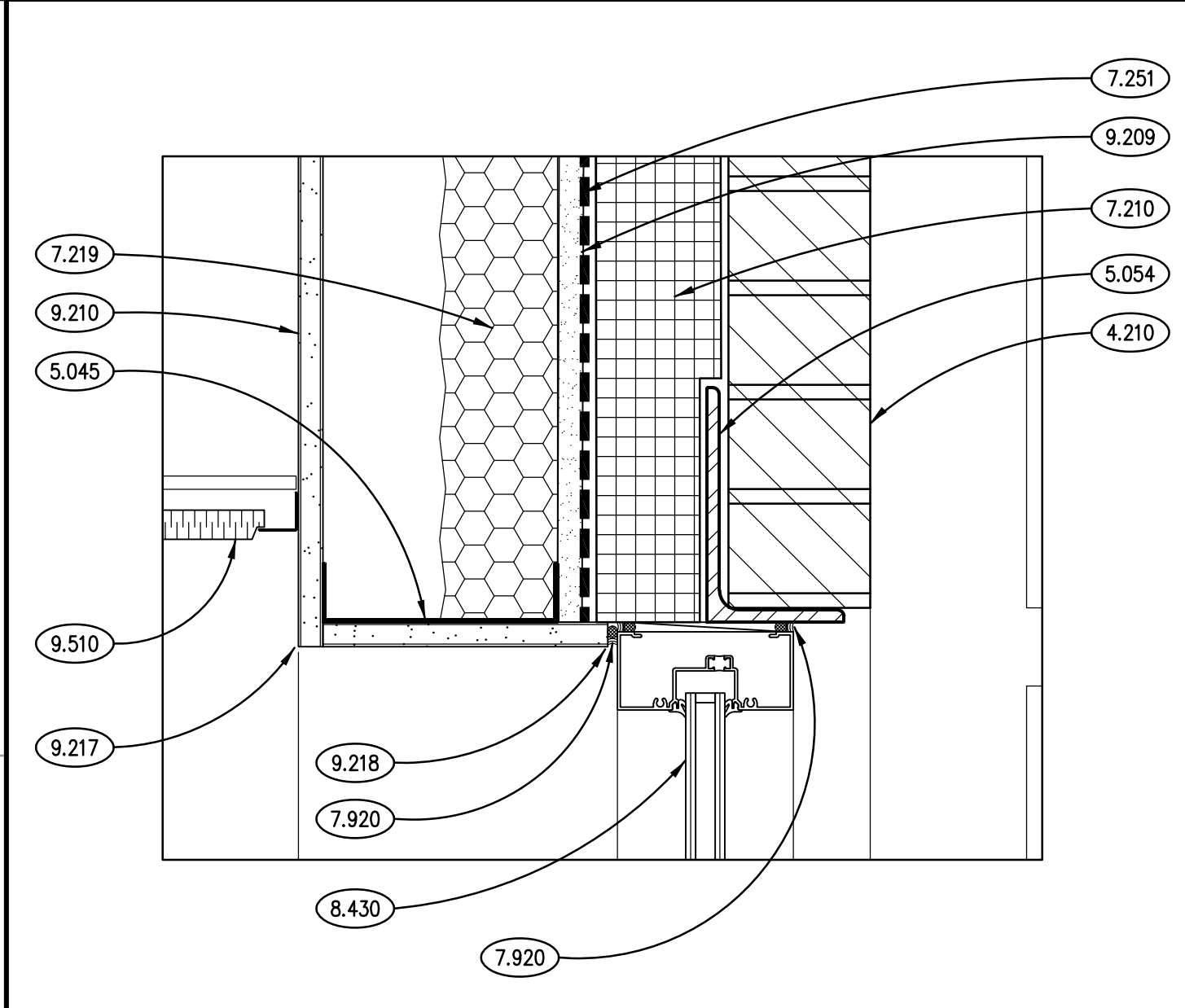
**HEAD DETAIL**  
SCALE: 3" = 1'-0" **11**



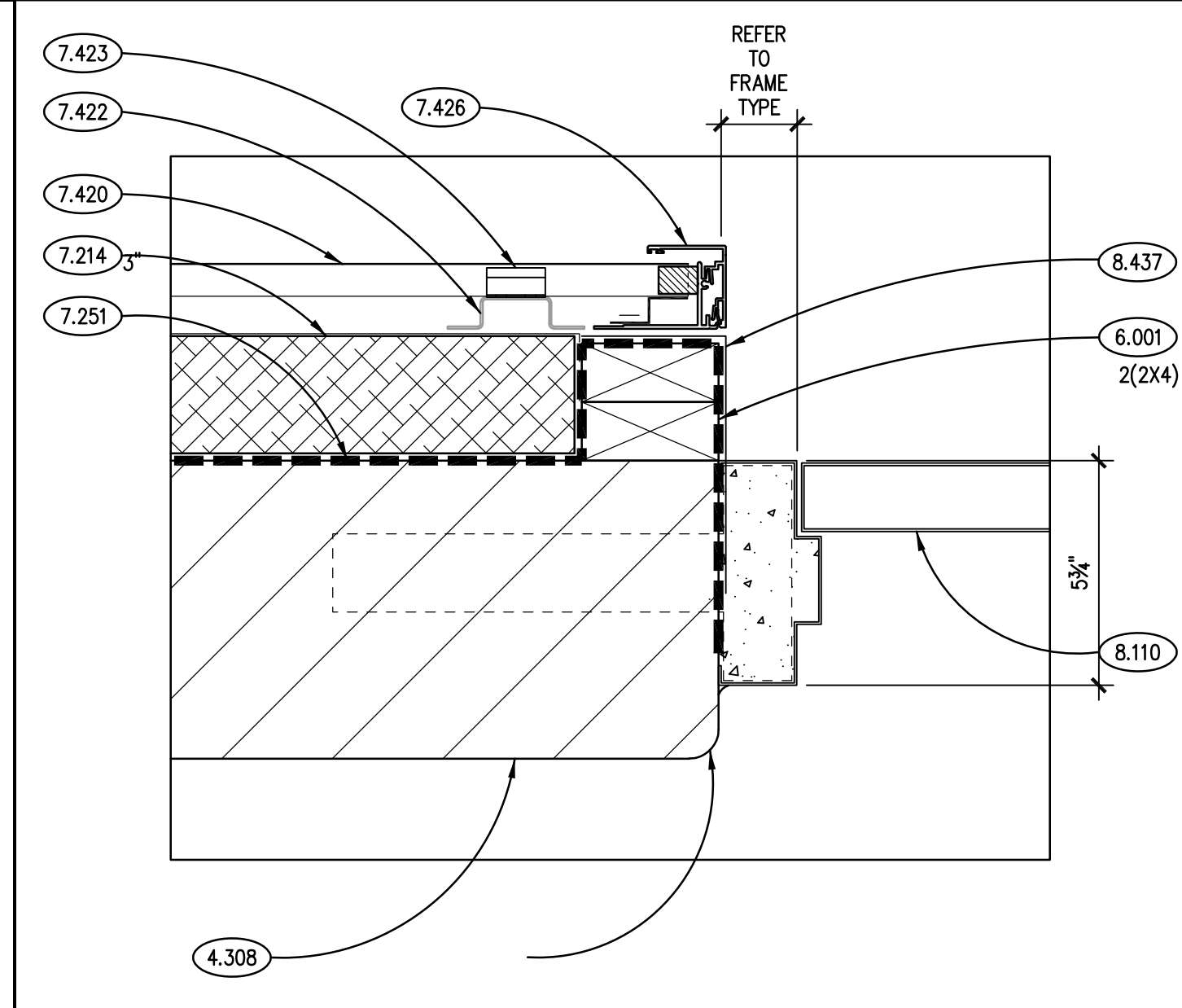
**JAMB DETAIL**  
SCALE: 3" = 1'-0" **7**



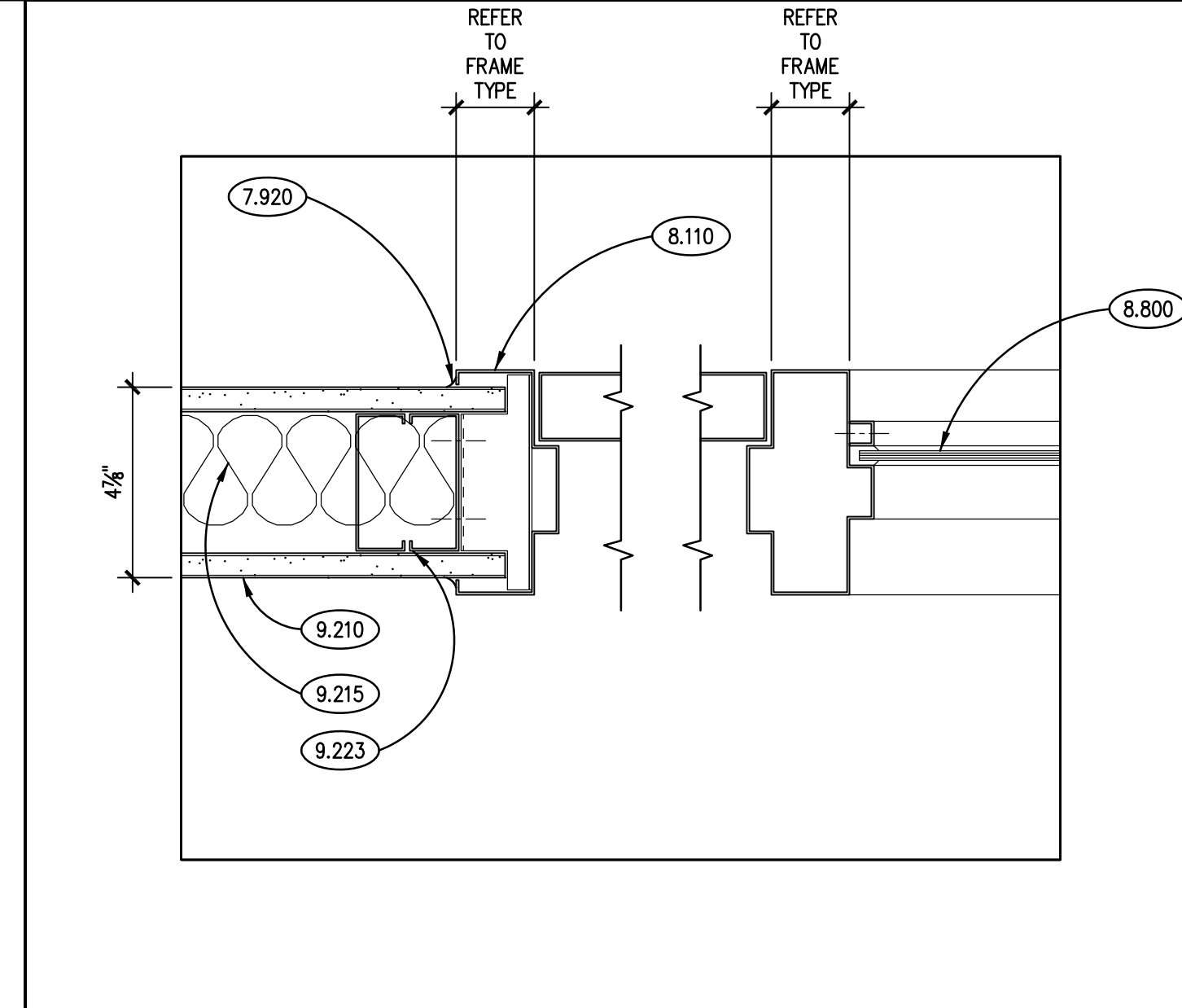
**JAMB DETAIL**  
SCALE: 3" = 1'-0" **3**



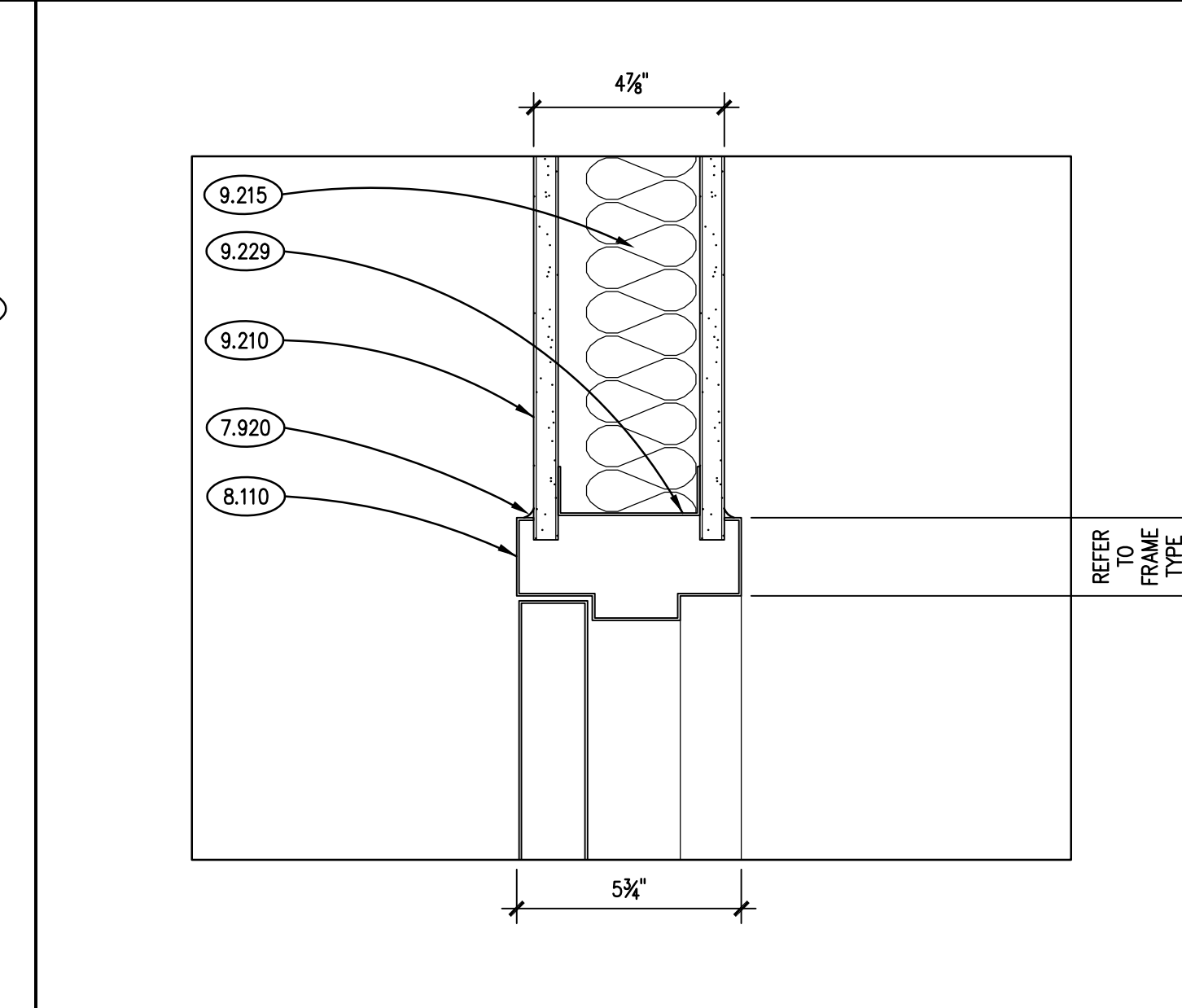
**HEAD DETAIL**  
SCALE: 3" = 1'-0" **14**



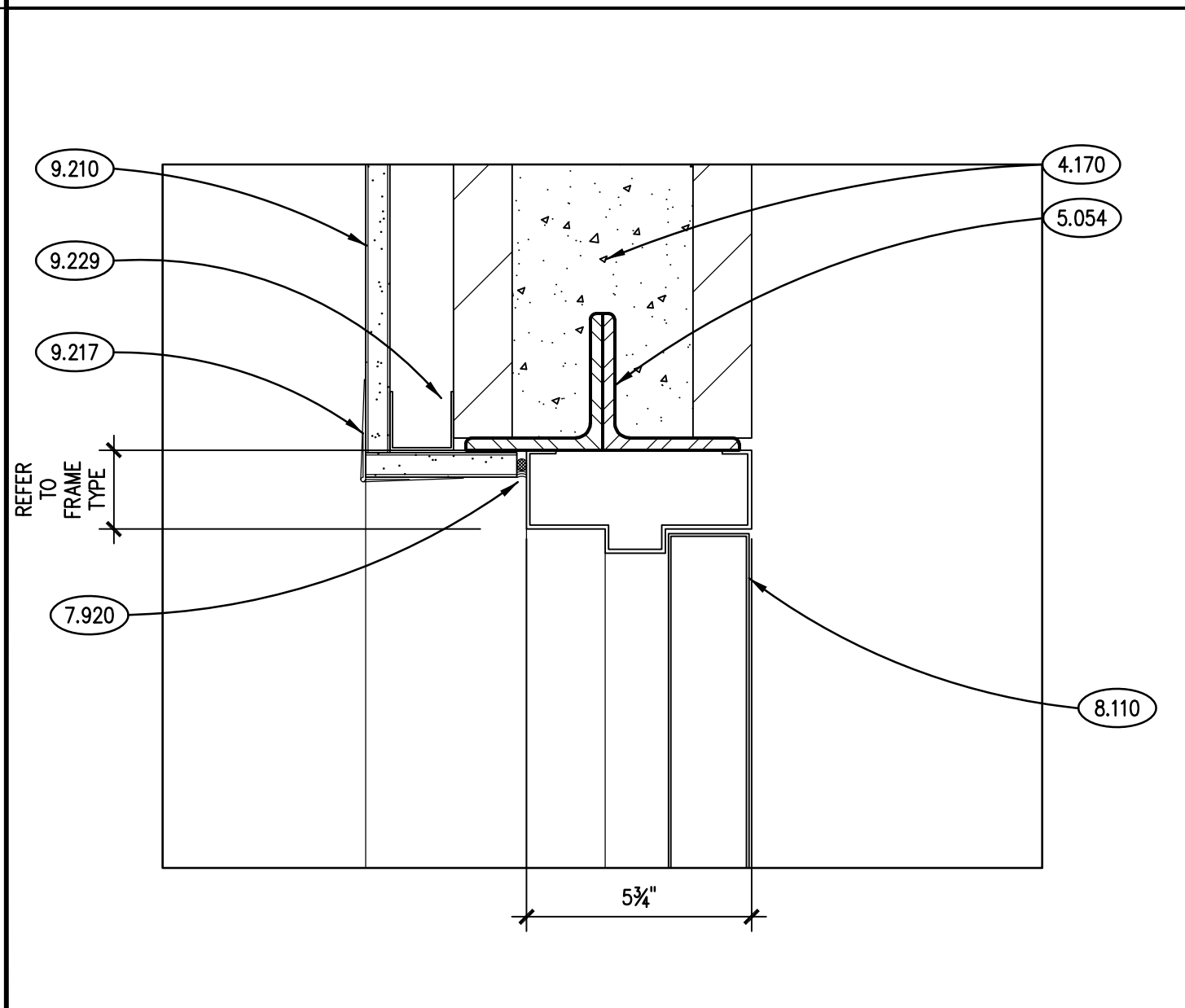
**JAMB DETAIL**  
SCALE: 3" = 1'-0" **10**



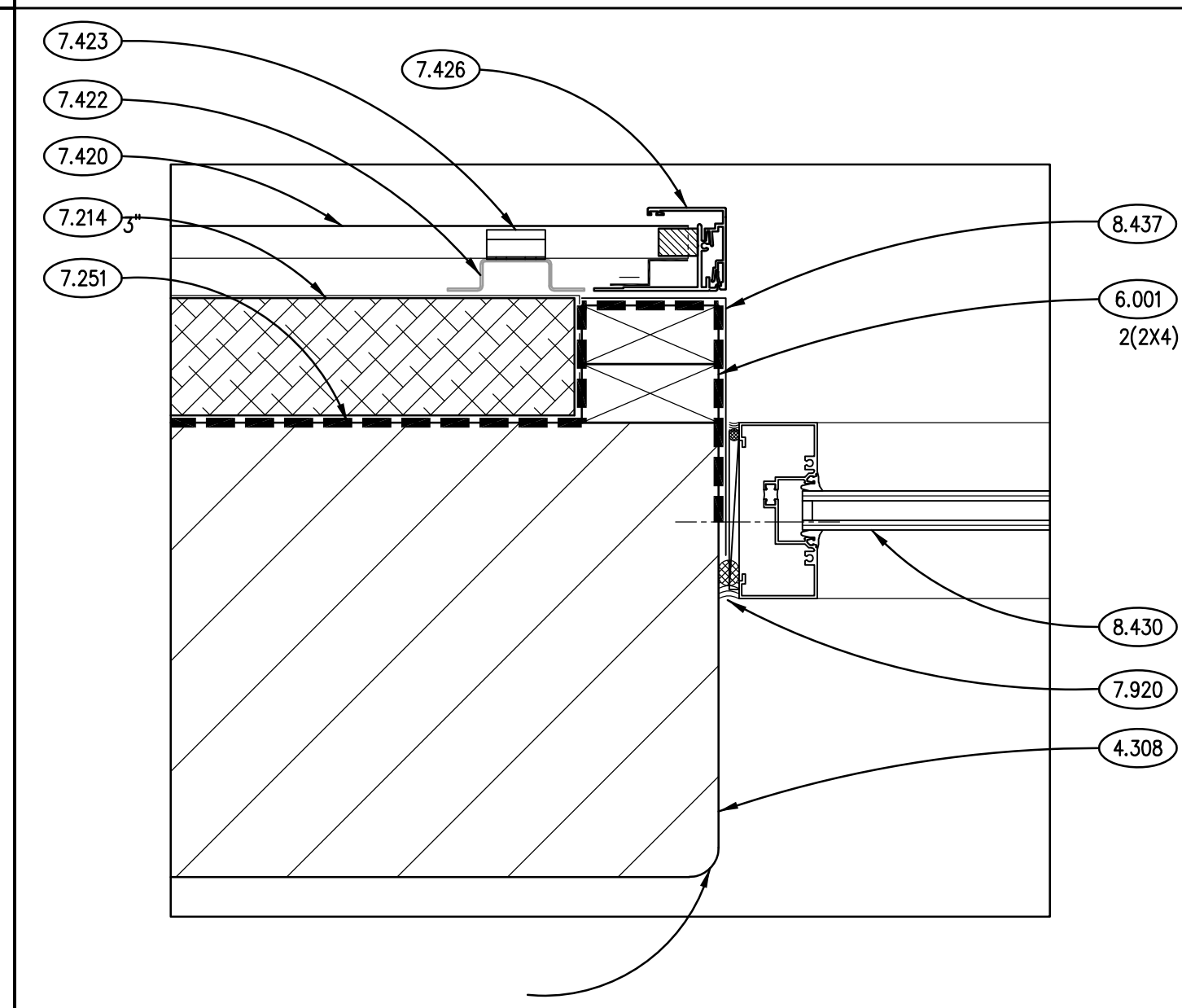
**JAMB DETAIL**  
SCALE: 3" = 1'-0" **6**



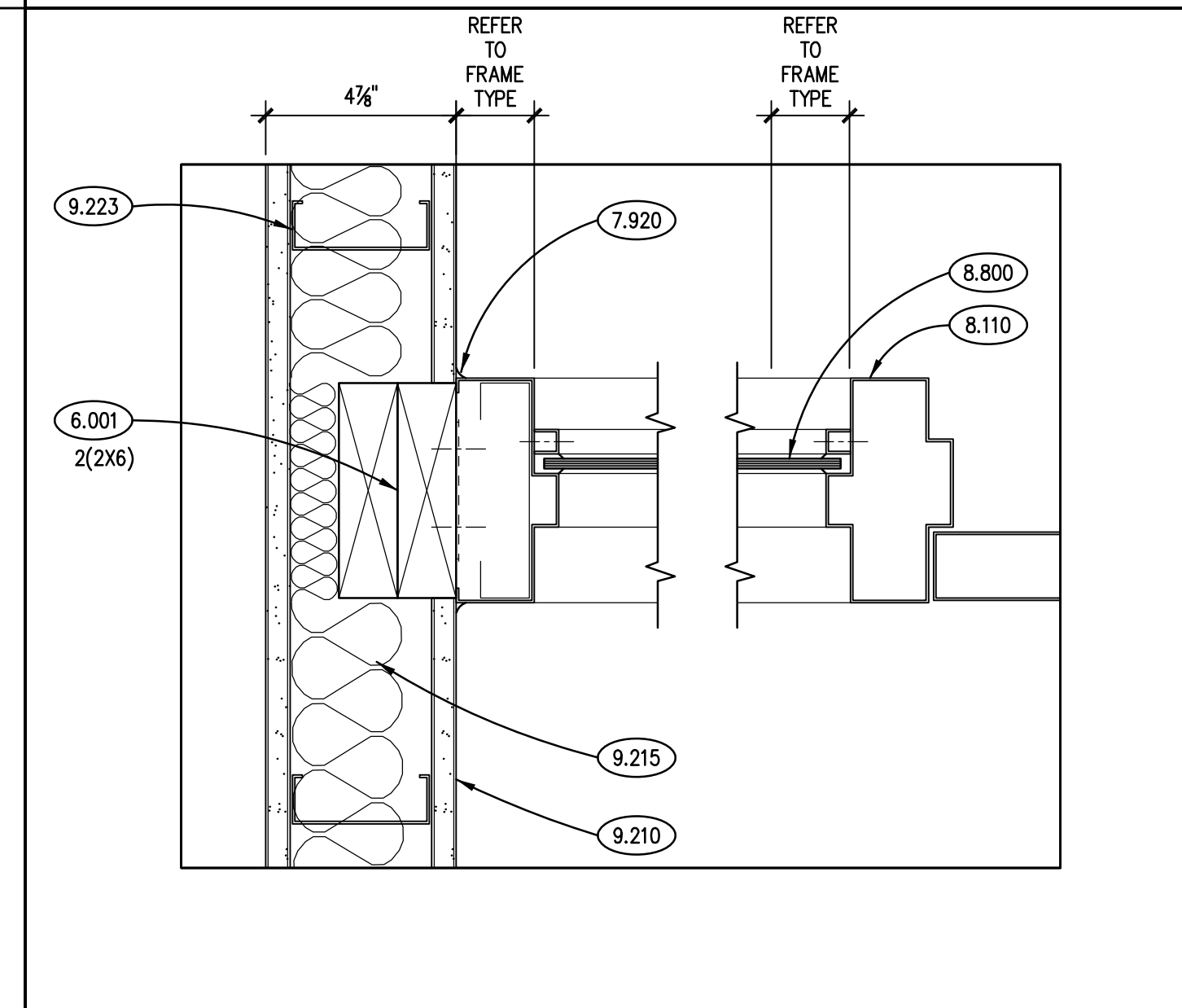
**HEAD DETAIL**  
SCALE: 3" = 1'-0" **2**



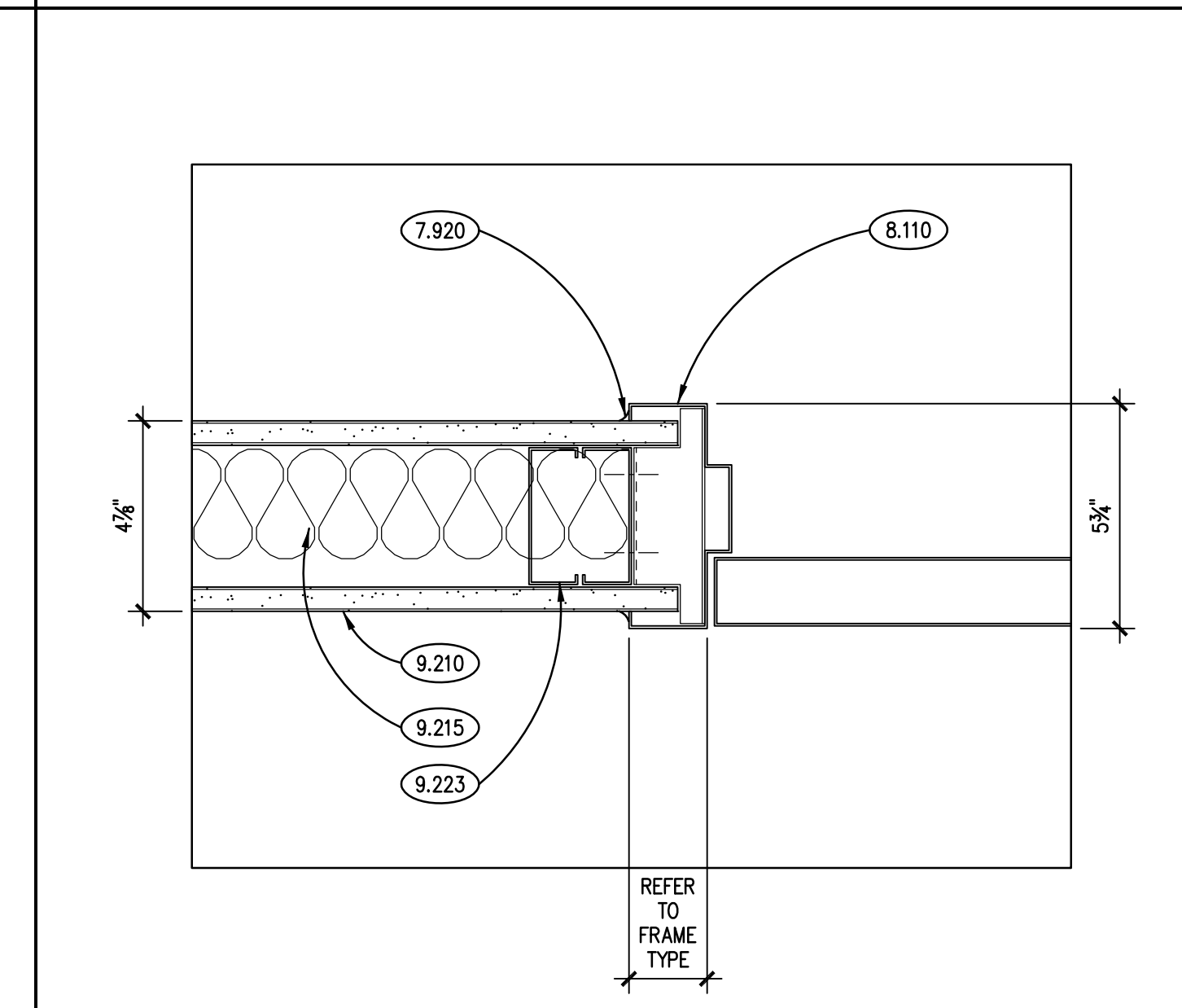
**HEAD DETAIL**  
SCALE: 3" = 1'-0" **13**



**JAMB DETAIL**  
SCALE: 3" = 1'-0" **9**



**JAMB DETAIL**  
SCALE: 3" = 1'-0" **5**



**JAMB DETAIL**  
SCALE: 3" = 1'-0" **1**

**KEYNOTES**

KEYNOTES ARE NOT ALWAYS REPEATED ACROSS ALL DRAWINGS ON THIS SHEET. AN UN-KEYNOTED ITEM ON THIS SHEET IS THE SAME AS A KEYNOTED ITEM ON THIS SHEET HAVING THE SAME GRAPHIC APPEARANCE.

- 4.170 MASONRY GROUT: CONTINUOUS GROUTED SOLID MASONRY COURSES. REFER TO SPECIFICATIONS.
- 4.183 MASONRY ANCHORAGE AND REINFORCEMENT: MASONRY VENEER ANCHOR; FOR ATTACHMENT TO COLD-FORMED METAL STUDS.
- 4.191 MASONRY ACCESSORY: THROUGH-WALL FLASHING; RUBBERIZED ASPHALT SHEET WITH STAINLESS STEEL DRIP EDGE; HOLD BACK RUBBERIZED ASPHALT SHEET AT LEAST 1 INCH FROM EXTERIOR FACE OF WALL.
- 4.194 MASONRY ACCESSORY: MORTAR DROPPING CONTROL DEVICE.
- 4.210 BRICK MASONRY VENEER: MODULAR; RUNNING BOND; REFER TO SPECIFICATIONS.
- 4.308 CONCRETE BLOCK MASONRY: 8" (NOM.) THK.; RUNNING BOND.
- 4.722 CAST STONE MASONRY: HEADER COURSE; SIZE AND CONFIGURATION AS INDICATED; PROVIDE CAST DRIP AT ALL OVERHANG EDGES. SLOPE TOP TO DRAIN AS SHOWN. RAKE OUT MORTAR AND PROVIDE BOND BREAKER AND JOINT SEALANT AT ALL HEAD JOINTS.
- 4.801 MASONRY ASSEMBLY: CONTINUOUS BOND BEAM WITH REINFORCING AND GROUT. PROVIDE (2)-#4 BARS U.N.O. COORDINATE ELEVATION WITH BEARING CONDITIONS AND ADJACENT WALL CONSTRUCTION; BOND BEAM LENGTH TO BE DISTANCE BETWEEN CONTROL JOINTS.
- 5.045 COLD FORMED METAL FRAMING: STUD RUNNER: SIZE TO MATCH METAL STUDS.
- 5.054 METAL FABRICATION: STEEL LINTEL; REFER TO STRUCTURAL DRAWINGS.
- 6.001 WOOD BLOCKING: DIMENSIONAL LUMBER; SIZE AS INDICATED; REFER TO SCHEDULE FOR TREATMENT.
- 6.002 WOOD BLOCKING: DIMENSIONAL LUMBER; SIZE AS REQUIRED; REFER TO SCHEDULE FOR TREATMENT.
- 6.007 PLYWOOD: 3/4" THICK; REFER TO SPECIFICATIONS FOR TREATMENT.
- 7.210 INSULATION: BOARD, EXTRUDED POLYSTYRENE (XPS); MIN. R-5.4 PER INCH THICKNESS; 2" THICKNESS UNLESS INDICATED OTHERWISE.
- 7.214 INSULATION: MINERAL FIBER BOARD; MIN. R-4.2 PER INCH THICKNESS; 2" THICKNESS UNLESS INDICATED OTHERWISE.
- 7.219 FOAMED-IN-PLACE INSULATION: THICKNESS AS REQUIRED TO ACHIEVE A MINIMUM THERMAL RESISTANCE OF R-21 (UNLESS NOTED OTHERWISE); APPLY INTUMESCENT COATING TO ALL SURFACES NOT SEPARATED FROM THE BUILDING INTERIOR BY GYPSUM WALLBOARD.
- 7.251 WEATHER BARRIER COATING: SPRAY-APPLIED; REFER TO SPECIFICATIONS.
- 7.255 WEATHER BARRIER ACCESSORY: BASE FLASHING; 0.032" ALUMINUM; REFER TO SPECIFICATIONS.
- 7.420 METAL WALL PANEL SYSTEM: PREFINISHED WITH CONCEALED FASTENERS. REFER TO SPECIFICATIONS.
- 7.422 METAL WALL PANEL SYSTEM COMPONENT: SUBGRIT.
- 7.423 METAL WALL PANEL SYSTEM COMPONENT: PANEL ATTACHMENT CLIP.
- 7.428 METAL WALL PANEL SYSTEM ACCESSORY: PREFINISHED EXTRUDED ALUMINUM HEAD/JAMB TRIM.
- 7.920 JOINT SEALANT: REFER TO SCHEDULE IN SPECIFICATION SECTION 07 92 00; PROVIDE BACKER ROD OR BOND BREAKER.
- 8.110 STEEL DOOR FRAME: REFER TO DOOR, FRAME AND BORROWED LIGHT SCHEDULE.
- 8.430 ALUMINUM STOREFRONT FRAMING.
- 8.437 ALUMINUM STOREFRONT ACCESSORY: 0.032" SHEET ALUMINUM HEAD/JAMB FLASHING; FINISH TO MATCH STOREFRONT FRAMING; SET IN CONTINUOUS SEALANT BEAD AND SEAL LAPS.
- 8.800 GLAZING: REFER TO DOOR/FRAME/WINDOW SCHEDULES FOR TYPE.
- 9.209 GYPSUM BOARD: 5/8" THK.; EXTERIOR GRADE, GLASS MAT FACED.
- 9.210 GYPSUM BOARD: 5/8" THK.; TYPE "X".
- 9.215 GYPSUM BOARD ACCESSORY: ACOUSTICAL INSULATION: SOUND ATTENUATION BATTS; THICKNESS AS SPECIFIED.
- 9.217 GYPSUM BOARD ACCESSORY: CORNER BEAD.
- 9.218 GYPSUM BOARD ACCESSORY: EDGE TRIM; "L" PROFILE.
- 9.223 METAL STUD FRAMING: 3-5/8" STUD; 16" O.C. SPACING; 20 GAUGE UNLESS NOTED OTHERWISE; ANCHORAGE TO SUIT APPLICATION.
- 9.226 METAL STUD FRAMING: 6" STUD; 16" O.C. SPACING; 20 GAUGE UNLESS NOTED OTHERWISE; ANCHORAGE TO SUIT APPLICATION.
- 9.229 METAL STUD FRAMING: STUD RUNNER; SIZE TO MATCH METAL STUDS.
- 9.510 ACOUSTICAL CEILING PANELS AND GRID. REFER TO A800 SERIES DRAWINGS AND SPECIFICATIONS.
- 10.222 FOLDING PANEL PARTITION AND TRACK ASSEMBLY; PROVIDE ANCHOR SPACING TO STEEL CONTRACTOR. REFER TO SPECIFICATIONS.

**GENERAL NOTES**

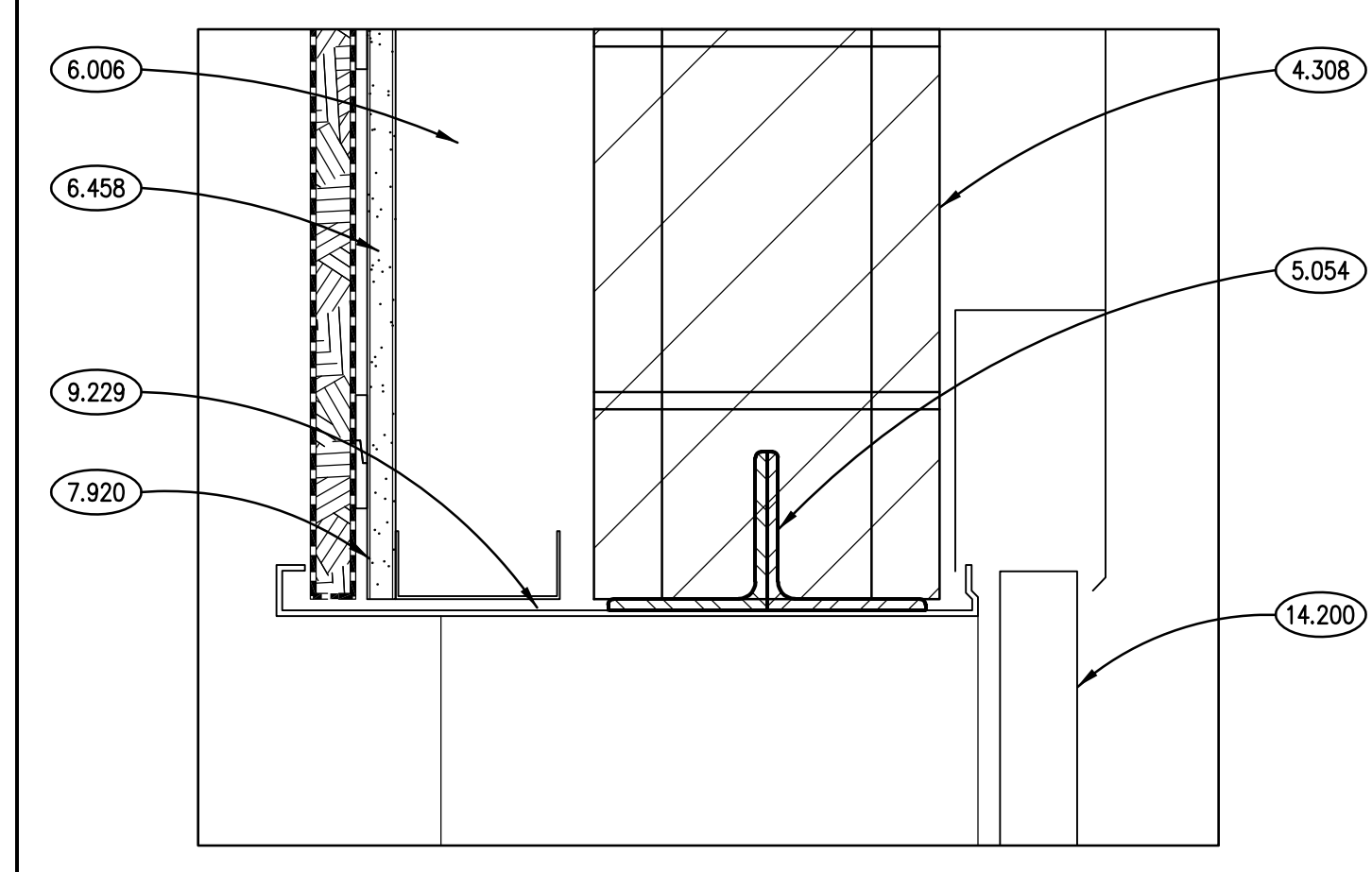
1. REFER TO DRAWING G200 FOR PROJECT GENERAL NOTES.
2. COORDINATE FIRE RATED ASSEMBLIES INFORMATION CONTAINED ON DRAWING G301 & G302 WITH THE WORK OF ALL CONTRACTS.
3. REFER TO A600 SERIES BUILDING SECTION DRAWINGS FOR TOP OF FLOOR AND TOP OF MASONRY ELEVATIONS.
4. REFER TO STRUCTURAL LINTEL DRAWINGS FOR BOTTOM OF LINTEL ELEVATIONS.
5. IN METAL STUD/GYPSUM BOARD PARTITIONS, WALLS AND CEILINGS, PROVIDE 2X FIRE RETARDANT TREATED WOOD BLOCKING FOR WALL-MOUNTED & CEILING-MOUNTED ITEMS REQUIRING MECHANICAL ANCHORAGE.
6. WHERE DETAILS REQUIRE JOINT SEALANT TO SEAL WEATHER BARRIER COATING TO ADJACENT CONSTRUCTION AT OPENINGS AND PENETRATIONS, PROVIDE BOND TESTING TO PROVE THAT JOINT SEALANT BONDS ADEQUATELY TO WEATHER BARRIER COATING, OR PROVIDE 0.032" ALUMINUM CORNER FLASHING, SEALED TO WEATHER BARRIER.

ISSUED	REV.	DATE	BY	DESCRIPTION
	1	12/05/18	B.P.	ISSUE FOR PERMITTING
	2	12/05/18	B.P.	ISSUE FOR PERMITTING
	3	12/05/18	B.P.	ISSUE FOR PERMITTING
	4	12/05/18	B.P.	ISSUE FOR PERMITTING
	5	12/05/18	B.P.	ISSUE FOR PERMITTING
	6	12/05/18	B.P.	ISSUE FOR PERMITTING
	7	12/05/18	B.P.	ISSUE FOR PERMITTING
	8	12/05/18	B.P.	ISSUE FOR PERMITTING
	9	12/05/18	B.P.	ISSUE FOR PERMITTING

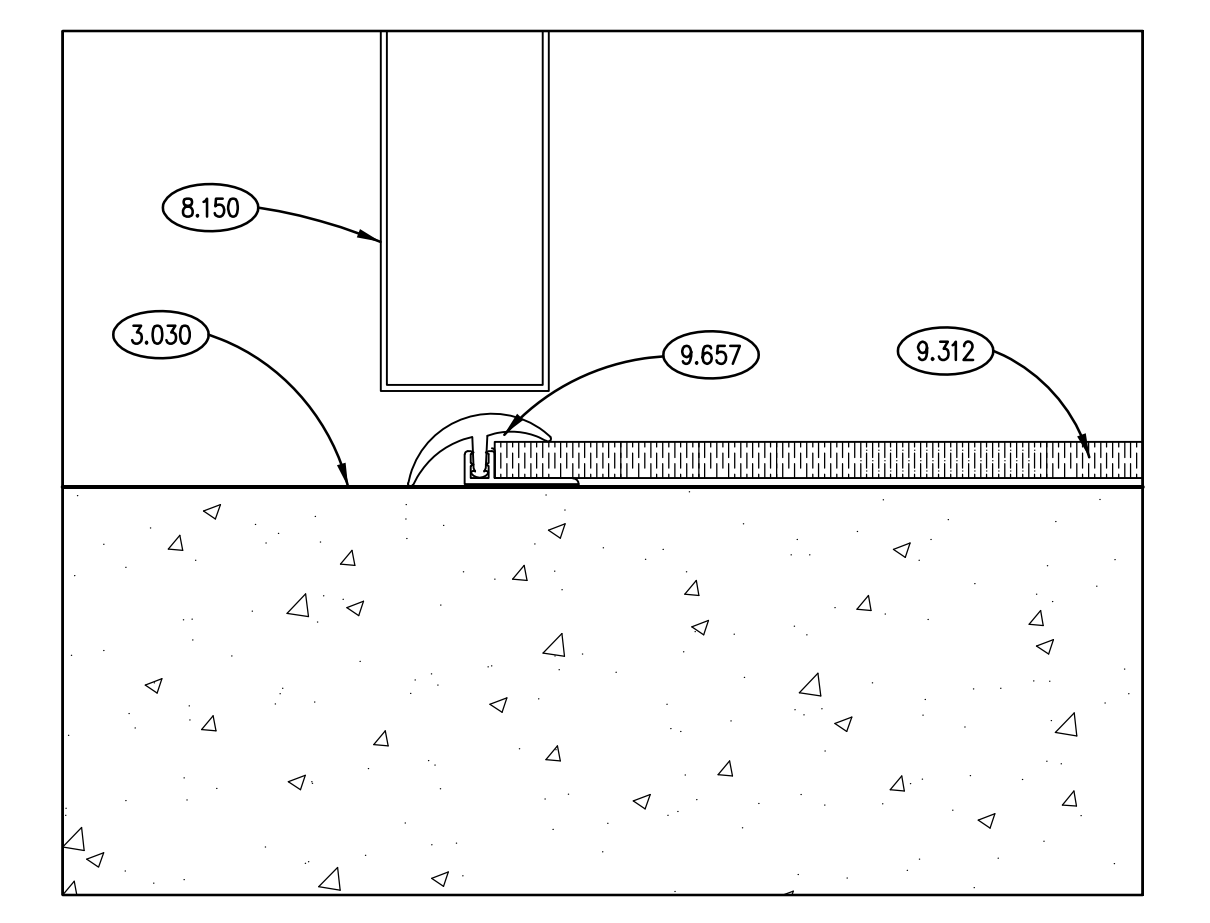
ISSUED	REV.	DATE	BY	DESCRIPTION
	1	12/05/18	B.P.	ISSUE FOR PERMITTING
	2	12/05/18	B.P.	ISSUE FOR PERMITTING
	3	12/05/18	B.P.	ISSUE FOR PERMITTING
	4	12/05/18	B.P.	ISSUE FOR PERMITTING
	5	12/05/18	B.P.	ISSUE FOR PERMITTING
	6	12/05/18	B.P.	ISSUE FOR PERMITTING
	7	12/05/18	B.P.	ISSUE FOR PERMITTING
	8	12/05/18	B.P.	ISSUE FOR PERMITTING
	9	12/05/18	B.P.	ISSUE FOR PERMITTING

JOB NO.	17-401-1124
DRAWN	PJT
CHECKED	CDH
APPROVED	CJH

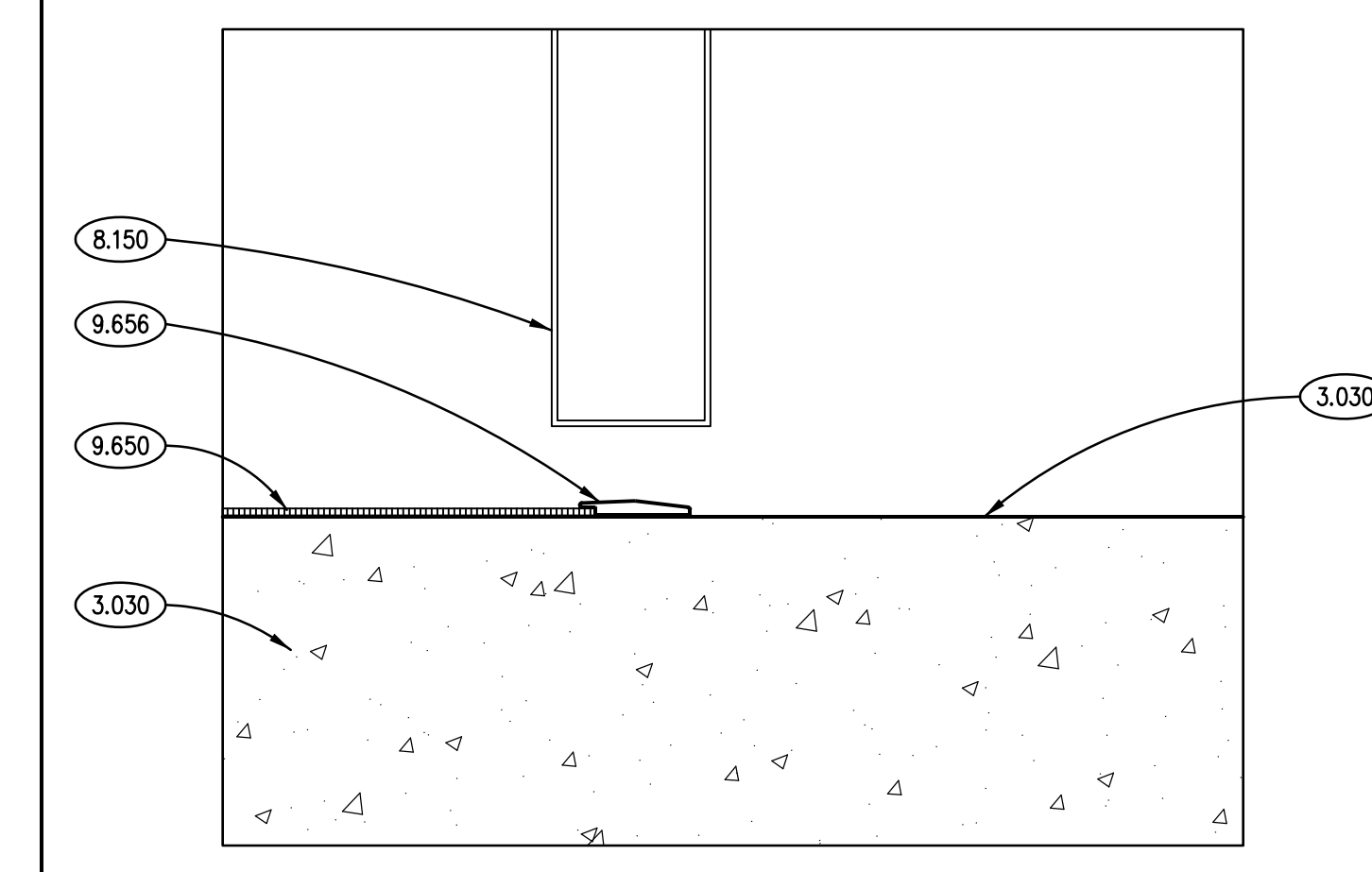
SHEET TITLE	DOOR DETAILS
SHEET NUMBER	A830



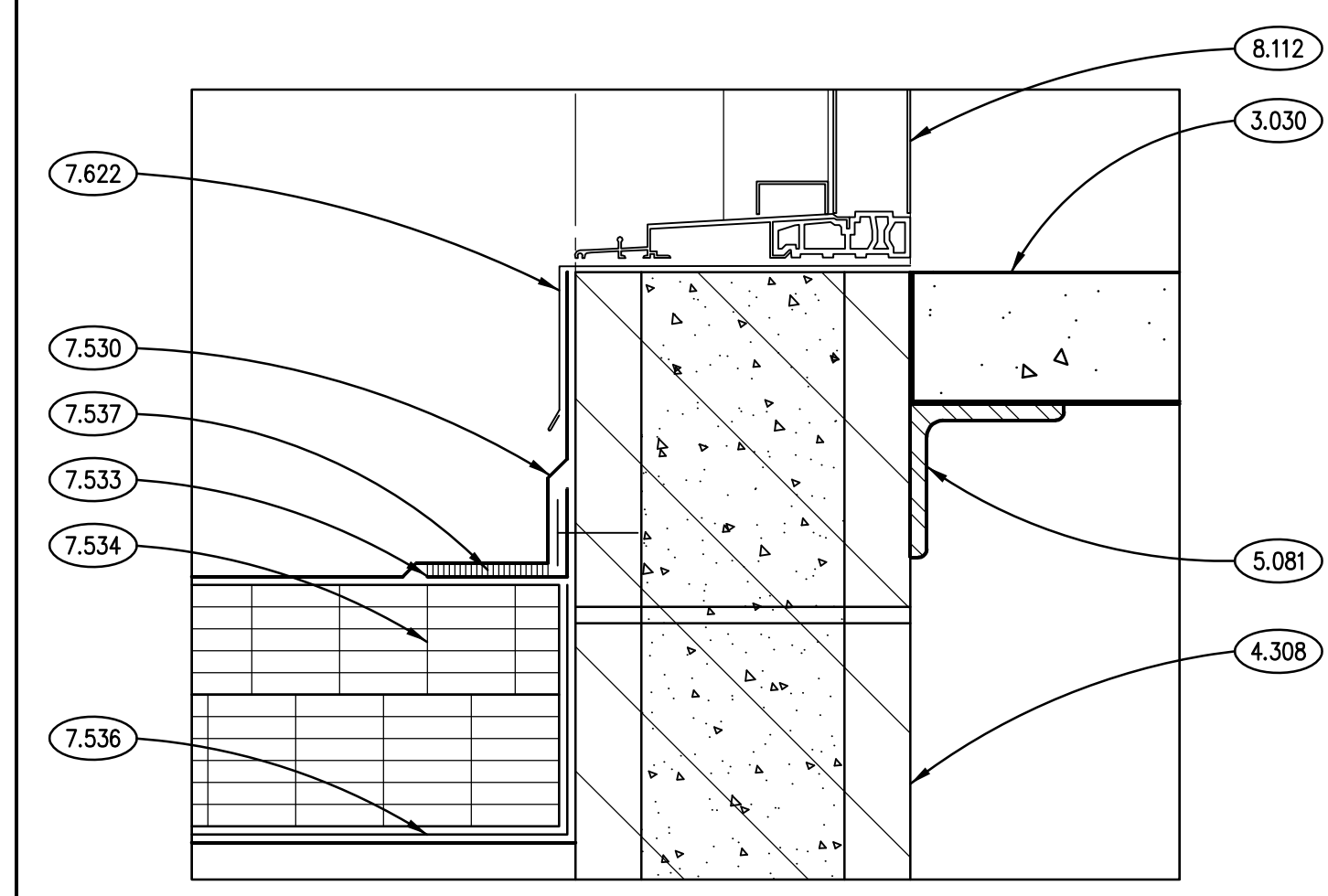
**HEAD/JAMB SIM. DETAIL**  
SCALE: 6" = 1'-0" **12**



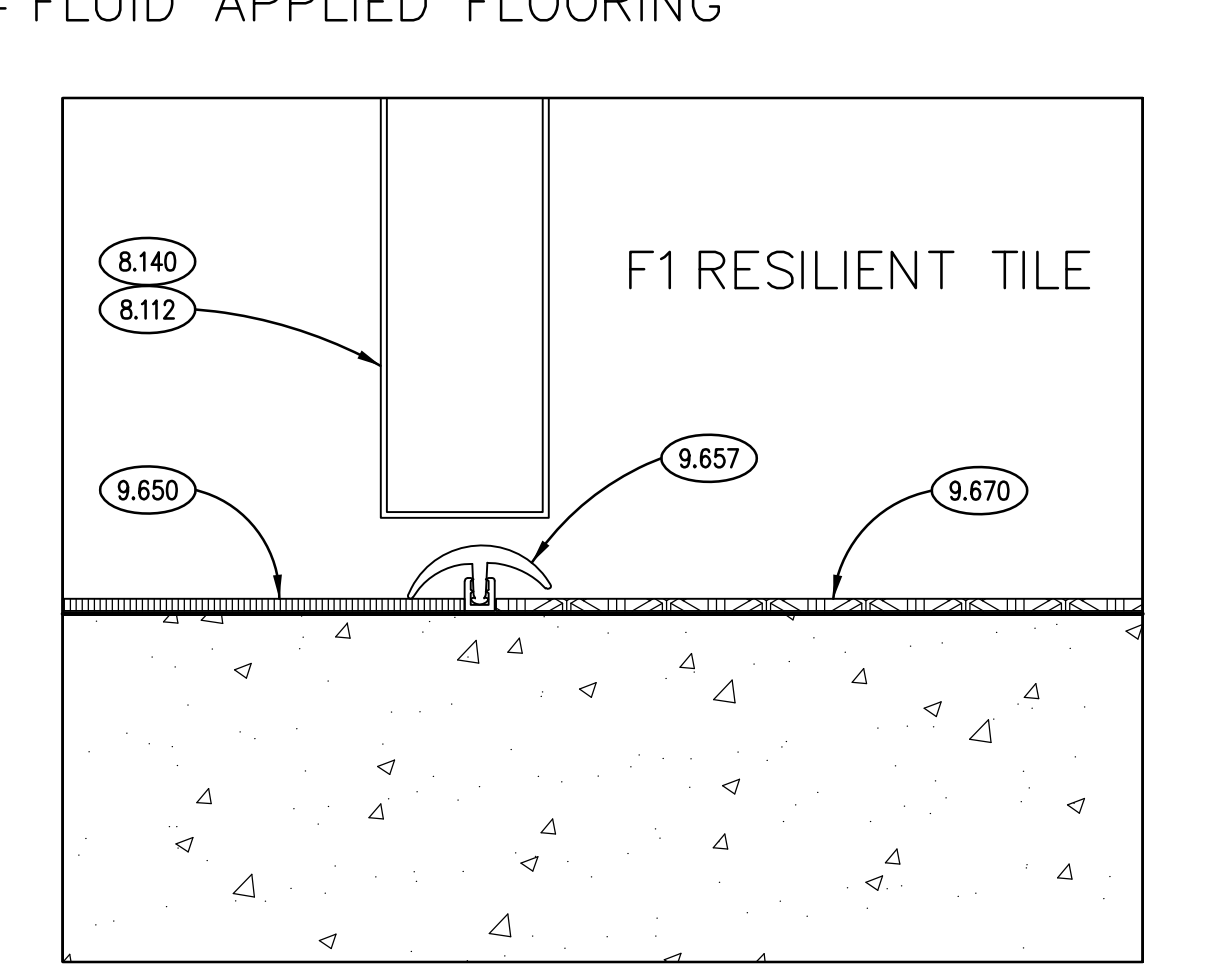
**SILL DETAIL**  
SCALE: 6" = 1'-0" **8**



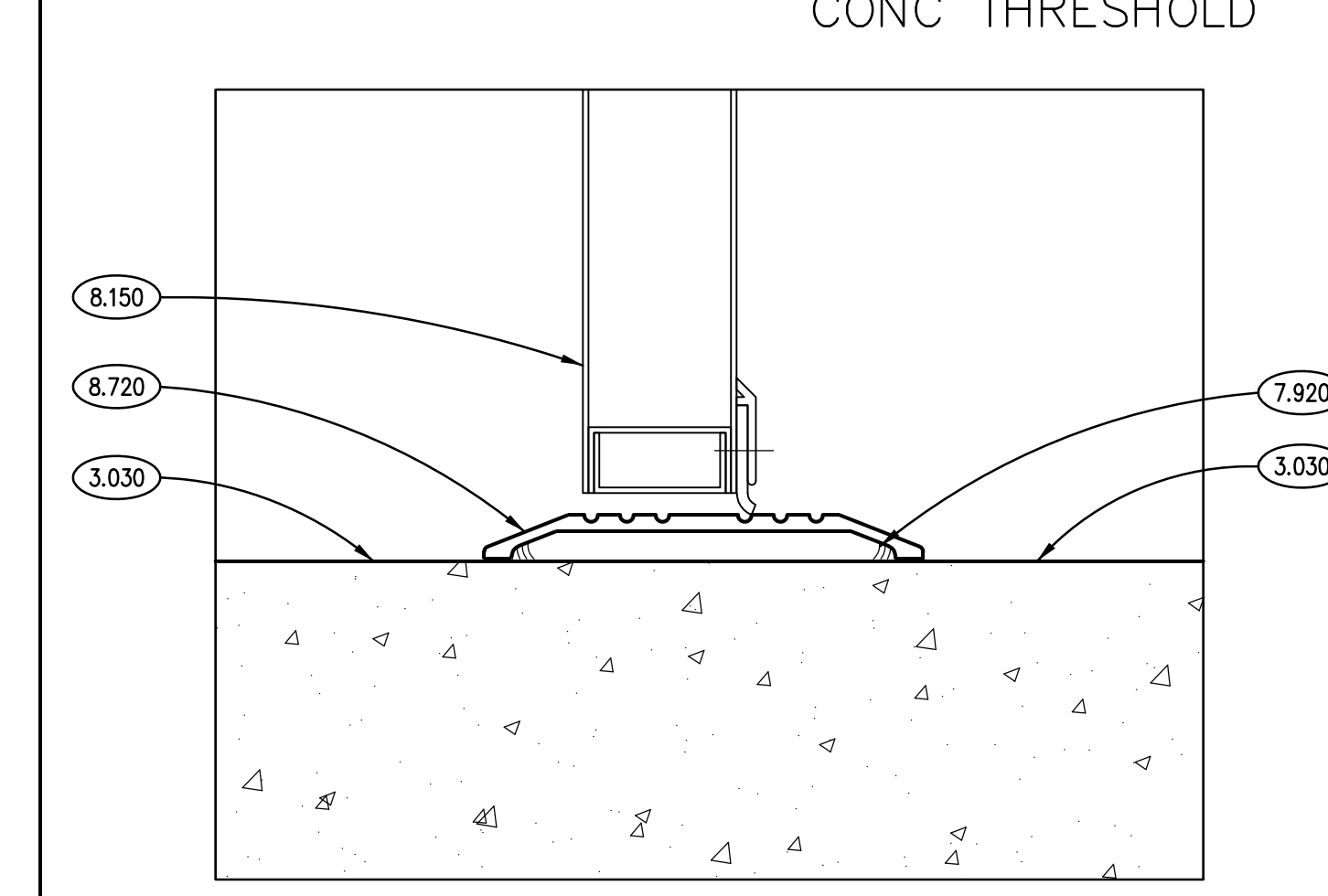
**SILL DETAIL**  
SCALE: 3" = 1'-0" **4**



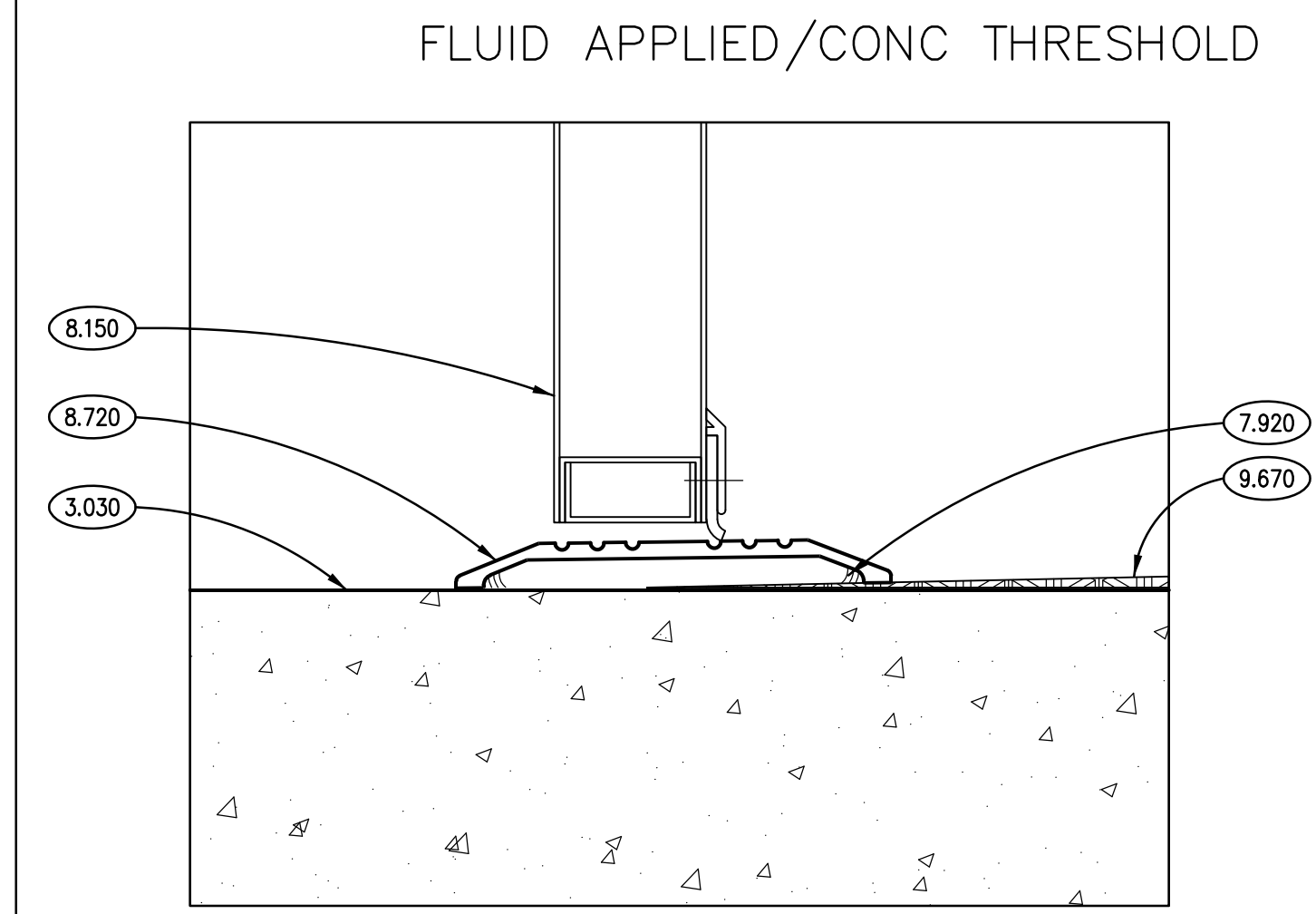
**SILL DETAIL**  
SCALE: 6" = 1'-0" **11**



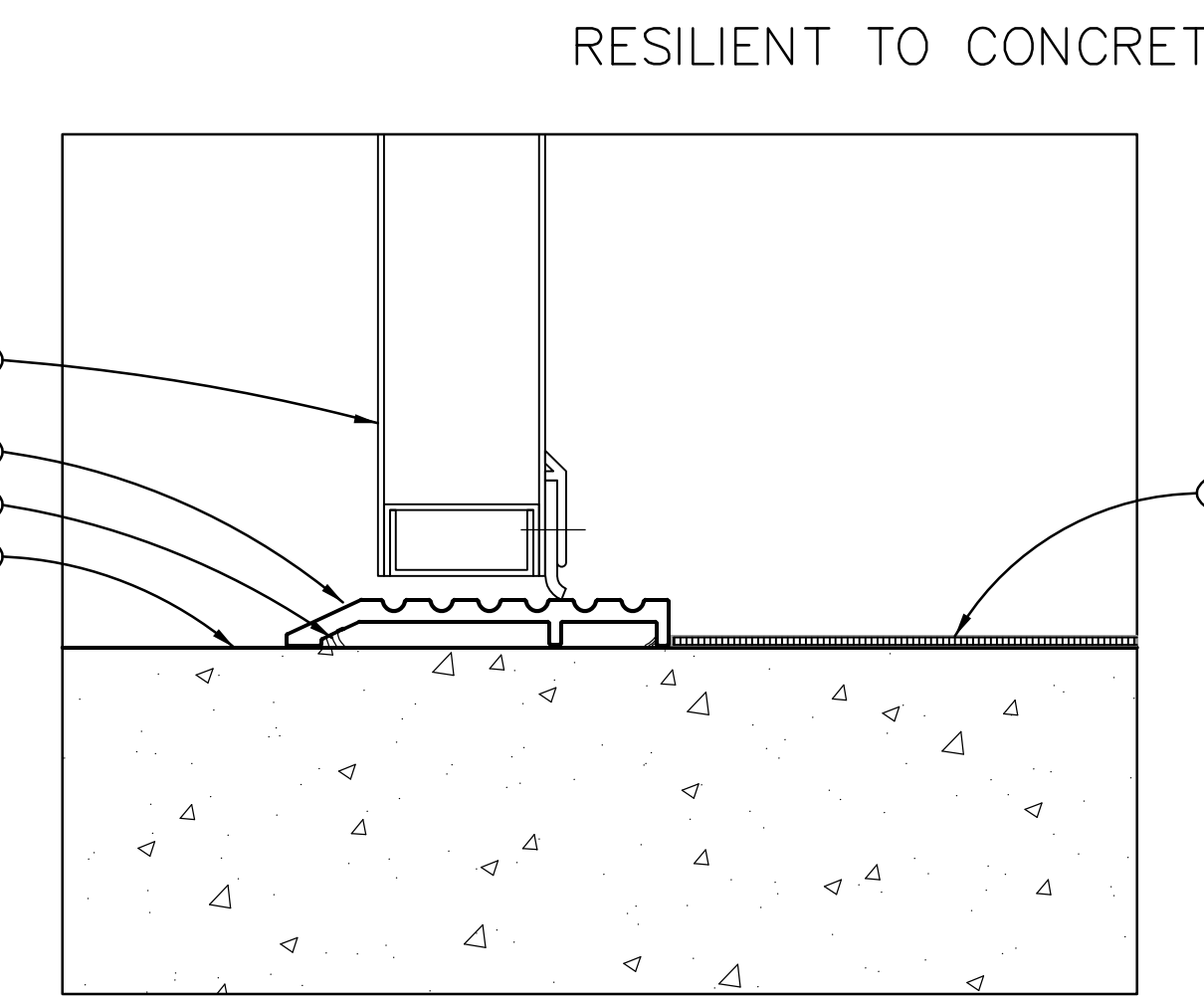
**SILL DETAIL**  
SCALE: 6" = 1'-0" **7**



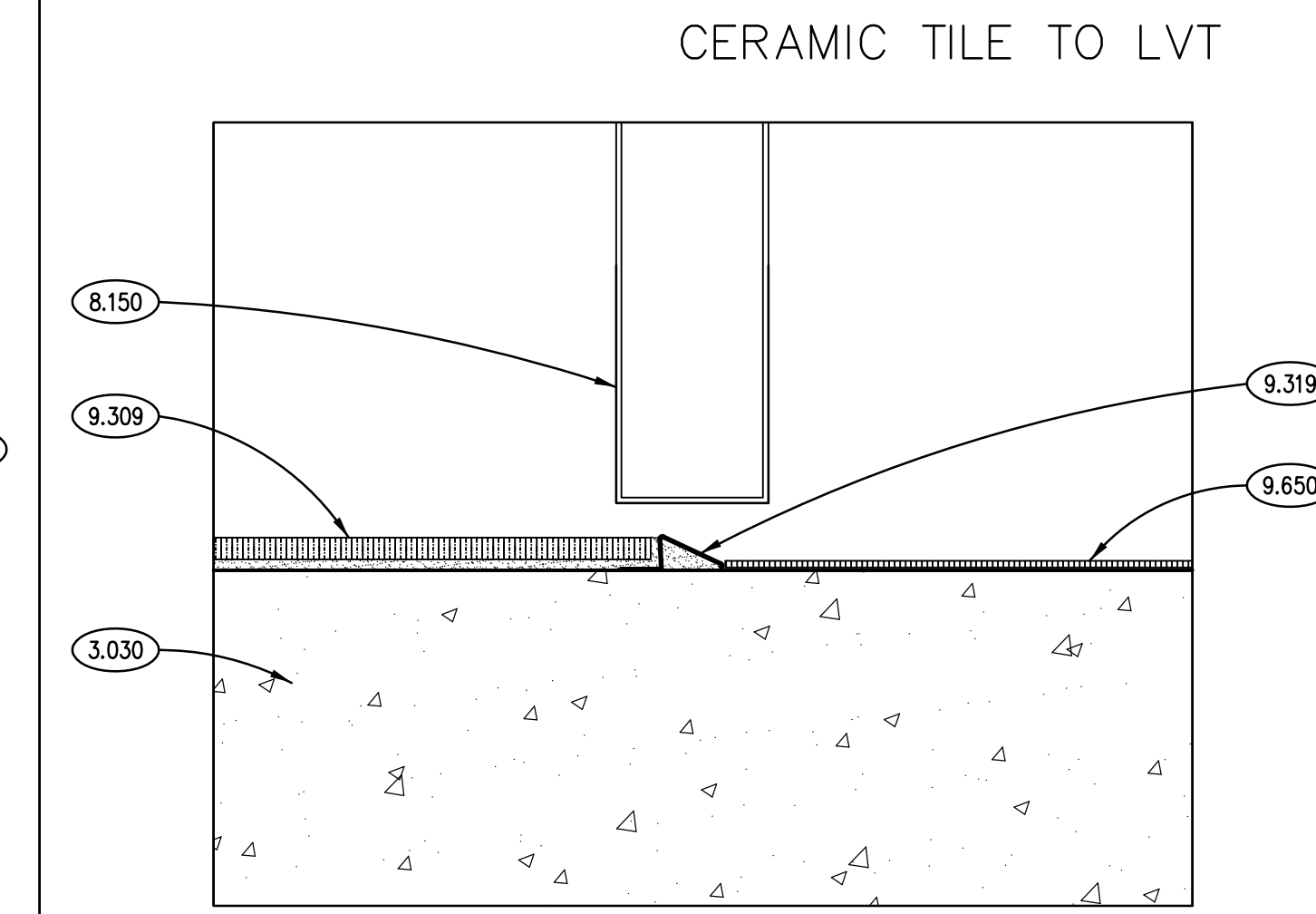
**SILL DETAIL**  
SCALE: 3" = 1'-0" **3**



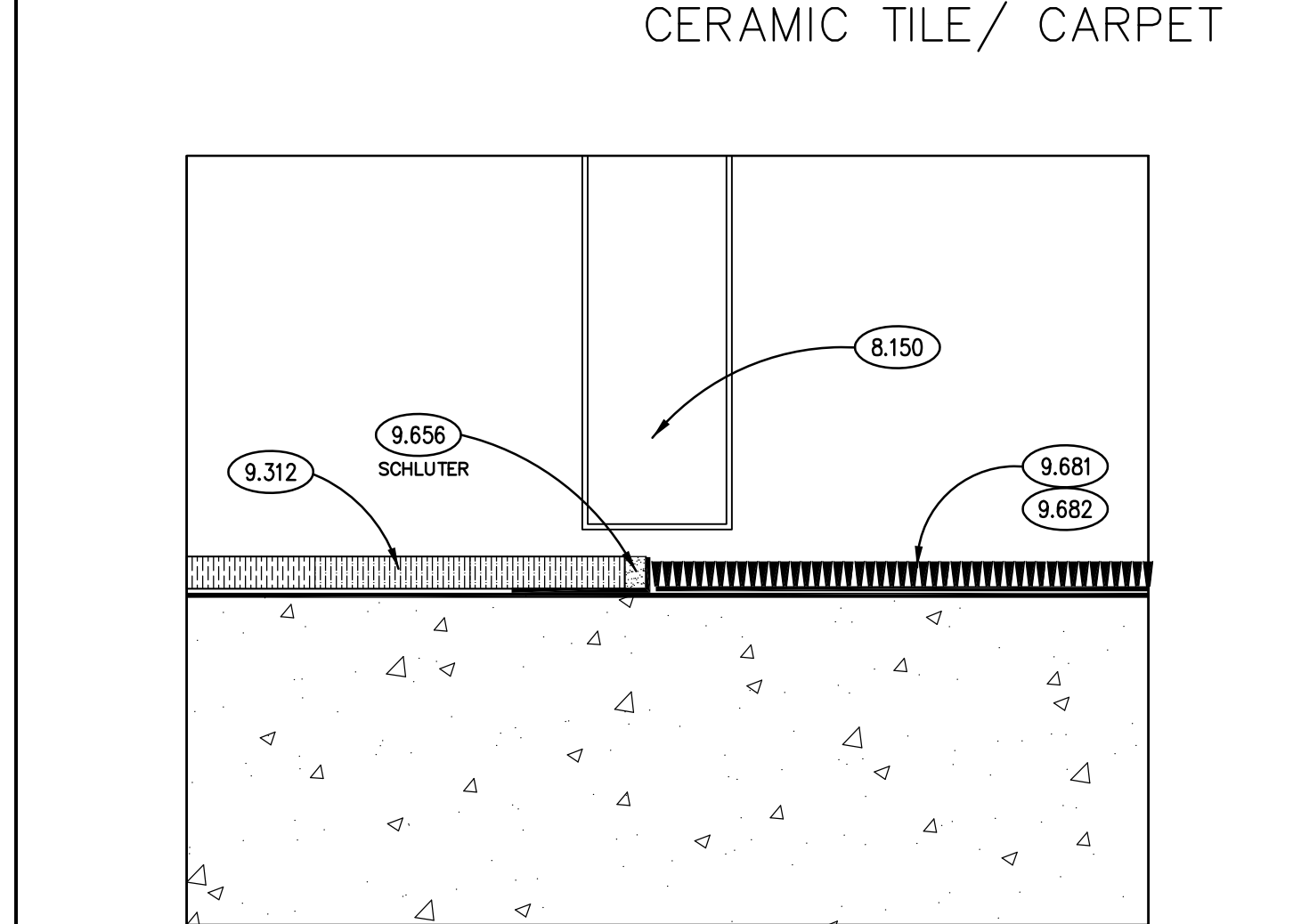
**SILL DETAIL**  
SCALE: 3" = 1'-0" **10**



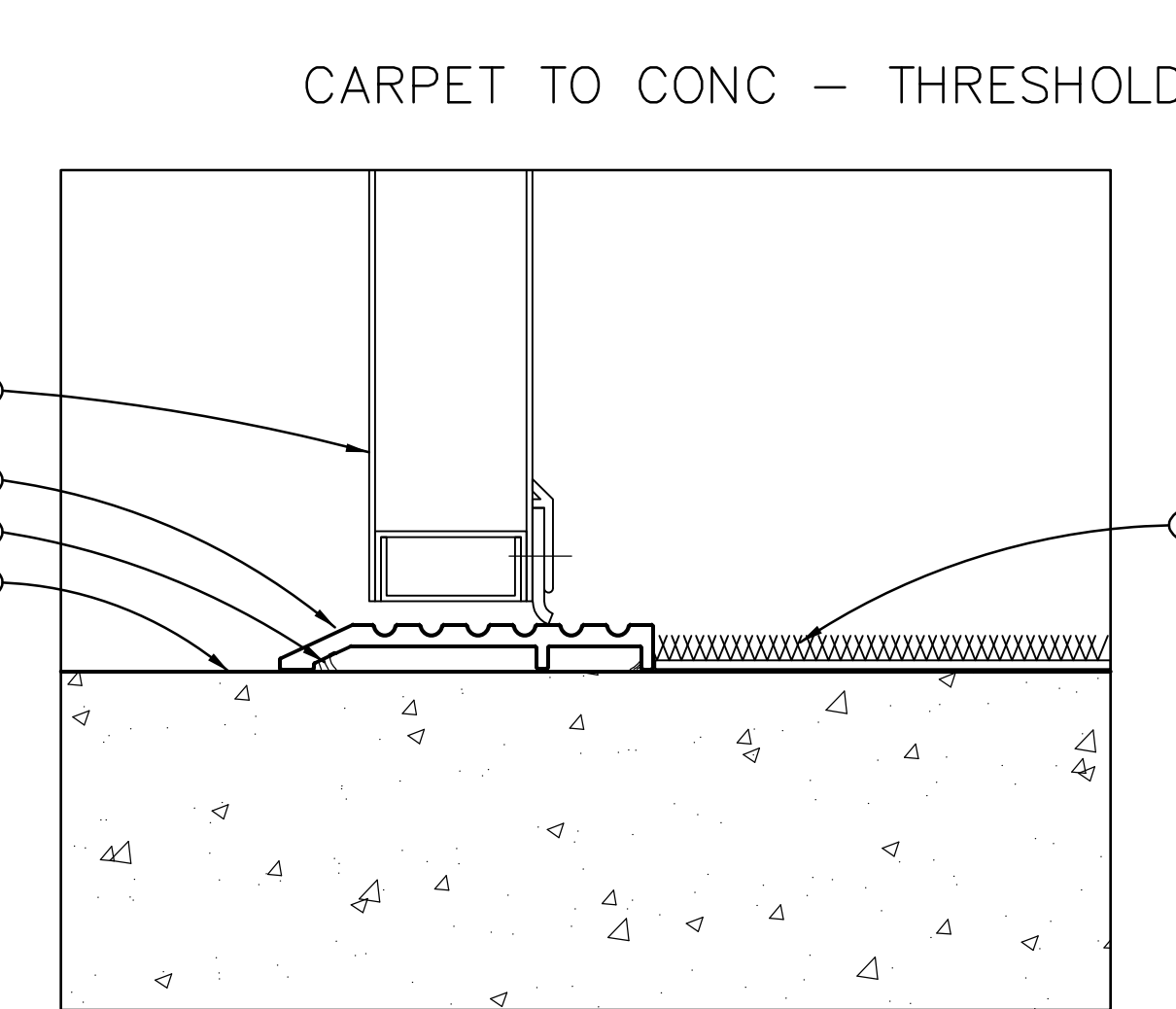
**SILL DETAIL**  
SCALE: 3" = 1'-0" **6**



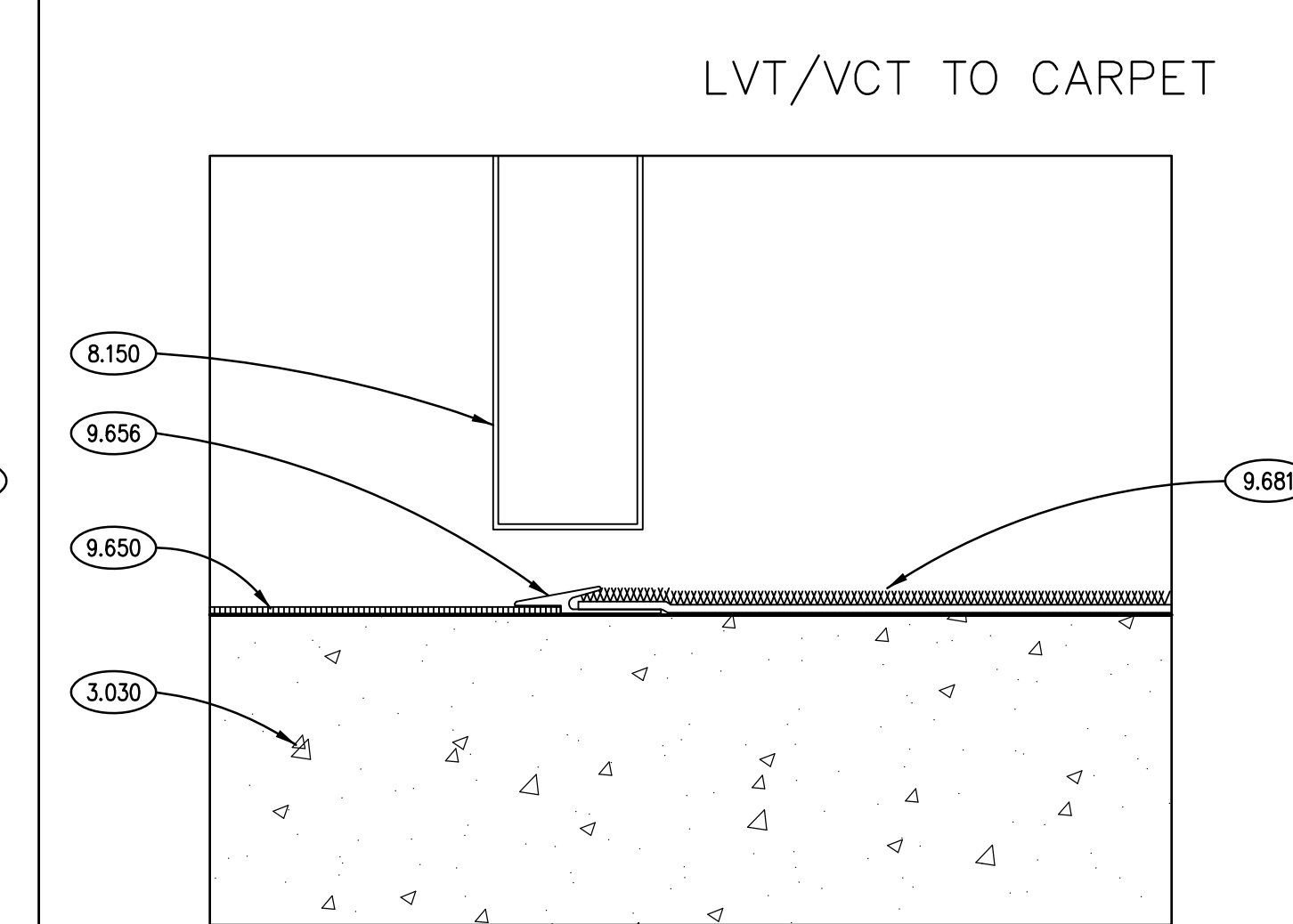
**SILL DETAIL**  
SCALE: 3" = 1'-0" **2**



**SILL DETAIL**  
SCALE: 6" = 1'-0" **9**



**SILL DETAIL**  
SCALE: 3" = 1'-0" **5**



**SILL DETAIL**  
SCALE: 3" = 1'-0" **1**

**KEYNOTES**

KEYNOTES ARE NOT ALWAYS REPEATED ACROSS ALL DRAWINGS ON THIS SHEET. AN UN-KEYNOTED ITEM ON THIS SHEET IS THE SAME AS A KEYNOTED ITEM ON THIS SHEET HAVING THE SAME GRAPHIC APPEARANCE.

- 3.030 CAST-IN-PLACE CONCRETE; REFER TO STRUCTURAL DRAWINGS.
- 4.308 CONCRETE BLOCK MASONRY; 8" (NOM.) THK.; RUNNING BOND.
- 5.054 METAL FABRICATION: STEEL LINTEL; REFER TO STRUCTURAL DRAWINGS.
- 5.081 METAL FABRICATION: STEEL ANGLE; REFER TO STRUCTURAL DRAWINGS.
- 6.006 PLYWOOD; 1/2" THICK; REFER TO SPECIFICATIONS FOR TREATMENT.
- 6.458 ARCHITECTURAL WOOD CASEWORK; PLASTIC LAMINATED WALL PANELS MOUNTED ON Z-CLIP SYSTEM; PANEL SIZE AS SHOWN; RATED CLASS B PER ASTM E84 OR UL 723.
- 7.530 ELASTOMERIC MEMBRANE ROOFING SYSTEM; FULLY ADHERED.
- 7.533 ELASTOMERIC MEMBRANE ROOFING MATERIAL: FLEXIBLE EPDM FLASHING.
- 7.534 ELASTOMERIC MEMBRANE ROOFING MATERIAL: RIGID INSULATION; 2 LAYERS; 3 INCH OVER 2 1/4 INCH; 5 1/2 INCHES TOTAL THICKNESS; R=30.8 (MIN).
- 7.536 ELASTOMERIC MEMBRANE ROOFING MATERIAL: VAPOR RETARDER.
- 7.537 ELASTOMERIC MEMBRANE ROOFING MATERIAL: ADHESIVE.
- 7.622 METAL COUNTERFLASHING; MATERIAL, THICKNESS AND FINISH AS SPECIFIED.
- 7.920 JOINT SEALANT; REFER TO SCHEDULE IN SPECIFICATION SECTION 07 92 00; PROVIDE BACKER ROD OR BOND BREAKER.
- 8.112 STEEL DOOR; REFER TO DOOR, FRAME AND BORROWED LIGHT SCHEDULE.
- 8.140 WOOD DOOR; REFER TO DOOR, FRAME AND BORROWED LIGHT SCHEDULE.
- 8.150 DOOR; REFER TO DOOR, FRAME AND BORROWED LIGHT SCHEDULE.
- 8.720 DOOR THRESHOLD; ALUMINUM; REFER TO SPECIFICATIONS.
- 9.229 METAL STUD FRAMING: STUD RUNNER; SIZE TO MATCH METAL STUDS.
- 9.309 CERAMIC FLOOR TILE; REFER TO ROOM FINISH SCHEDULE AND SPECIFICATIONS.
- 9.312 PORCELAIN TILE ACCESSORY: NON-CERAMIC TRIM, STAIRWAY NOSING TRIM. REFER TO SPECIFICATIONS.
- 9.319 CERAMIC FLOOR TILE ACCESSORY: STAINLESS STEEL TRANSITION STRIP. REFER TO SPECIFICATIONS.
- 9.650 RESILIENT FLOOR TILE; REFER TO A900 SERIES DRAWINGS.
- 9.656 RESILIENT ACCESSORY: TRANSITION STRIP.
- 9.657 RESILIENT ACCESSORY: TRANSITION STRIP WITH TRACK BASE.
- 9.670 FLUID APPLIED FLOORING; REFER TO A900 SERIES DRAWINGS.
- 9.681 CARPET TILE; REFER TO A900 SERIES DRAWINGS.
- 9.682 CARPET TILE; TRACK-OFF TYPE. REFER TO A900 SERIES DRAWINGS.
- 14.200 HYDRAULIC PASSENGER ELEVATOR; REFER TO SPECIFICATIONS.

**GENERAL NOTES**

1. REFER TO DRAWING G200 FOR PROJECT GENERAL NOTES.
2. COORDINATE FIRE RATED ASSEMBLIES INFORMATION CONTAINED ON DRAWING G301 & G302 WITH THE WORK OF ALL CONTRACTS.
3. REFER TO A600 SERIES BUILDING SECTION DRAWINGS FOR TOP OF FLOOR AND TOP OF MASONRY ELEVATIONS.
4. REFER TO STRUCTURAL LINTEL DRAWINGS FOR BOTTOM OF LINTEL ELEVATIONS.
5. IN METAL STUD/GYPSUM BOARD PARTITIONS, WALLS AND CEILINGS, PROVIDE 2X FIRE RETARDANT TREATED WOOD BLOCKING FOR WALL-MOUNTED & CEILING-MOUNTED ITEMS REQUIRING MECHANICAL ANCHORAGE.
6. WHERE DETAILS REQUIRE JOINT SEALANT TO SEAL WEATHER BARRIER COATING TO ADJACENT CONSTRUCTION AT OPENINGS AND PENETRATIONS, PROVIDE BOND TESTING TO PROVE THAT JOINT SEALANT BONDS ADEQUATELY TO WEATHER BARRIER COATING, OR PROVIDE 0.032" ALUMINUM CORNER FLASHING, SEALED TO WEATHER BARRIER.

**Kluber**  
Architects + Engineers

Kluber, Inc.  
Barrington, Illinois 60010  
Tel. 847.236.2170  
Gurnee, Illinois 60031  
Tel. 847.236.2428  
www.kluberinc.com

**WILL COUNTY HEALTH DEPARTMENT**

THE COUNTY OF WILL  
507 ELLA AVENUE  
JOLIET, IL 60433

ISSUED	REVISED	DATE	BY	DESCRIPTION
	1	11/13/18	B.P. #2	ADDENDUM #5
	2	11/13/18	B.P. #2	ADDENDUM #5
	3	11/13/18	B.P. #2	ADDENDUM #5
	4	11/13/18	B.P. #2	ADDENDUM #5
	5	11/13/18	B.P. #2	ADDENDUM #5
	6	11/13/18	B.P. #2	ADDENDUM #5
	7	11/13/18	B.P. #2	ADDENDUM #5
	8	11/13/18	B.P. #2	ADDENDUM #5
	9	11/13/18	B.P. #2	ADDENDUM #5
	10	12/05/18	B.P. #2	ADDENDUM #5
	11	12/05/18	B.P. #2	ADDENDUM #5
	12	12/12/18	B.P. #2	ADDENDUM #5

ISSUED	REVISED	DATE	BY	DESCRIPTION
	1	10/01/18	B.P. #1	ADDENDUM #1
	2	10/01/18	B.P. #1	ADDENDUM #1
	3	10/01/18	B.P. #1	ADDENDUM #1
	4	10/01/18	B.P. #1	ADDENDUM #1
	5	10/01/18	B.P. #1	ADDENDUM #1
	6	10/01/18	B.P. #1	ADDENDUM #1
	7	11/02/18	B.P. #2	ADDENDUM #2
	8	11/13/18	B.P. #2	ADDENDUM #2
	9	11/13/18	B.P. #2	ADDENDUM #2
	10	12/05/18	B.P. #2	ADDENDUM #2
	11	12/05/18	B.P. #2	ADDENDUM #2
	12	12/12/18	B.P. #2	ADDENDUM #2

JOB NO.	17-401-1124
DRAWN	PJT
CHECKED	CDH
APPROVED	CJH

SHEET TITLE  
**DOOR DETAILS**

SHEET NUMBER  
**A831**