



NEWS

FOR IMMEDIATE RELEASE
January 8, 2013

Contact: Wendy Abrams
630-241-6800 ext. 2387
wabrams@getipass.com

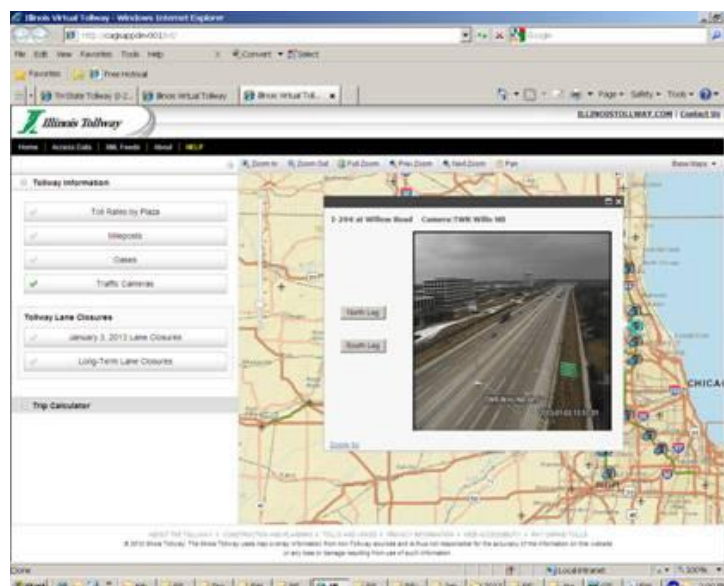
ILLINOIS TOLLWAY TO PROVIDE PUBLIC ACCESS TO TRAFFIC CAMERAS

DOWNERS GROVE, IL – The Illinois Tollway today announced expanded public access to traffic images by adding the feeds from 15 traffic camera locations to its website, www.illinoistollway.com. Customers can now access camera feeds that offer “bird’s eye” views from:

- 3 cameras along the Jane Addams Memorial Tollway (I-90)
- 8 cameras along the Tri-State Tollway (I-94/I-294)
- 2 cameras along the Veterans Memorial Tollway (I-355)
- 2 cameras along the Reagan Memorial Tollway (I-88)

“Customers are now able to go online anytime and see for themselves what the travel conditions are like on their way to their destinations,” said Illinois Tollway Executive Director Kristi Lafleur. “Our goal in posting these images online is to give our customers another valuable source of information to help them manage their travel decisions.”

The camera feeds are easily accessible by selecting the “View Traffic Cameras” link on the Tollway’s homepage. This link directs customers to the Illinois Tollway Virtual Map, a clickable map that allows customers to zoom in on a section of the Illinois Tollway system and select a camera icon to get a view from that location. Most cameras offer customers multiple roadway views. Customers can click on the “Traffic Cameras” tab located in the left navigation bar to identify camera locations. Camera images are uploaded approximately every five minutes, and viewers must refresh the page to view updates. Image quality is dependent on weather conditions.



The traffic cameras are just one option Illinois Tollway customers have to get the latest travel information. Other options include:

- 1-800-TOLL-FYI – Daily lane closure information
- www.travelmidwest.com – Real-time travel times
- www.nbcchicago.com – Up-to-the-minute traffic by roadway
- www.twitter.com – Real-time roadway incident information at Tollway Trip 90, Tollway Trip 88, Tollway Trip 355 and Tollway Trip 94/294

About the Illinois Tollway

The Illinois Tollway is a user-fee system that receives no state or federal funds for maintenance and operations. The agency maintains and operates 286 miles of interstate tollways in 12 counties in Northern Illinois, including the Reagan Memorial Tollway (I-88), the Veterans Memorial Tollway (I-355), the Jane Addams Memorial Tollway (I-90) and the Tri-State Tollway (I-94/I-294/I-80).

#